

ENGAGEMENT APPENDIX

Planning Process Summary - 2

Engagement Goals and Objectives - 4

Outreach Methods - 6

Engagement Key Findings - 12

Planning Process Summary

From the beginning, the PRAT Plan has been guided by broad community input. The feedback shared by residents of many backgrounds, ages, and neighborhoods drove the outcomes of the plan. The following section broadly summarizes each phase of the plan and major engagement milestones, which will be described in more detail later in this document.

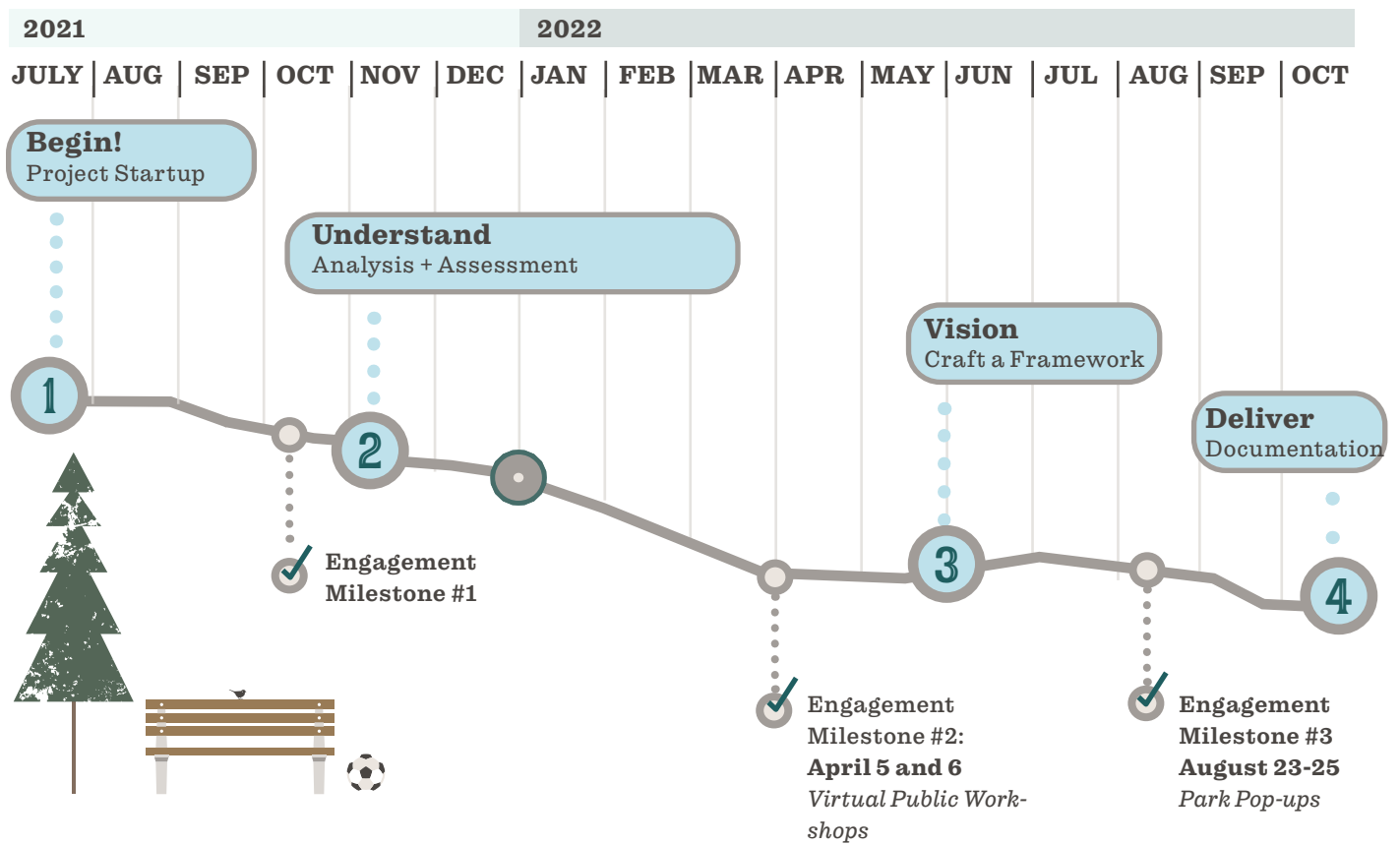
The first phase, and community engagement milestone #1, encompassed the discovery and understanding of Bozeman's unique recreation and parks system, its organization, and its provision of programs. It included a high level review of park types and distribution of parks and trails across the city, in depth study of historical and ecological systems, a needs assessment, and a public outreach strategy was developed to maximize public participation throughout the process. As part of the data-gathering in this phase, engage.bozeman.com/PRATplan was launched and included several opportunities to participate

in the plan online and the statistically valid survey was also created and sent to households throughout the city.

In the second phase (Vision & Concepts), which aligned with milestone #2, community feedback regarding patterns of use and barriers to accessing programs and places helped to inform the creation of system-wide concepts and plan themes. These concepts and themes were tested through public and staff review and comment, both on the [Engage.bozeman.com](http://engage.bozeman.com) site and in virtual public workshops.

The third phase of the process, which aligned with milestone #3, included establishing guiding goals and objectives, as well as, an implementation strategy. A review of trail connectivity, investments and maintenance was also conducted alongside a review of plan strategies in a series of pop-up activities with community members in parks throughout the city.

Project Schedule



Engagement Goals and Objectives

Community engagement is essential for an actionable plan. A successful engagement framework will create meaningful dialogue, facilitate decisions, and build enthusiasm. The Project Team worked with the City to shape a tailored participation plan that encouraged participation from all constituents, even amidst the challenges of this time for traditional gatherings. The plan included roles and responsibilities for the City and the Project Team, advertising schedules and major milestones, an approach to hard-to-reach populations, and measures of success.

Engagement Goals

The main objectives of community engagement for this project was to facilitate inclusive planning and decision-making and cultivate awareness of the City's parks, trails and programs as well as this planning effort. The key outreach goals that the team identified early on in the plan process are described in more detail below:

Educate and inspire stakeholders throughout the project timeline - The plan should be a learning experience for both the project team

and those in the community who engage in the planning effort. The outreach process needs to promote a greater understanding of the services the City provides, its growing relationship to maintenance of publicly accessible spaces, and parks and open spaces.

Help build long-lasting relationships with stakeholders - The 15-month planning process will have long-term implementation implications. Casting the engagement net broadly and early will help to facilitate meaningful connections to keep momentum going as projects are identified and implementation commences.

Public engagement should be fun - Ensure outreach tactics are interesting and digestible for audiences of all ages, abilities, and backgrounds.

Share project information in many venues, consistently to stakeholders - Use multiple methods to share information and encourage more participation in the planning effort. Continue to disseminate information about the plan's implementation long after the document is complete.



Milestone #1: October Kick-off Stakeholder Meetings



Milestone #1: SLAM Fest



Milestone #2: Bozeman Bike your Park Day



Milestone #2: GVLТ Trails Day Visioning



Milestone #3: Strategy Prioritizing in Parks



Milestone #3: Strategy Prioritizing in Parks

Outreach Methods

Much of the plan's development occurred during uncertainty in the COVID pandemic and encouraged the City to think creatively about meeting residents where they were and through diverse means of communication and engagement. To ensure people felt safe and included in their participation, the plan included both online and in-person engagement methods, like online workshops, pop-up events in parks and events, partnerships with other city initiatives and outreach methods, and both

statistically valid and community surveys with opportunities for residents to give feedback on preliminary plan recommendations.

In-person Engagement

Drop-in at local events: Tabling at existing events like farmers markets and City-sponsored festivals helped to reach residents unaware of the plan process and ask quick questions about needs and aspirations for the



Milestone #1: October Kick-off Stakeholder Meetings

future of the park, trail and recreation system. Early on, the City identified a series of events to participate in and destinations to visit to help build awareness of the plan process and goals and to gather feedback using questions relevant to what was being explored by the process at that time. For events happening in 2021, this meant asking about favorite parks and barriers to access using a map and mad libs exercise, in which residents responded to an incomplete sentence with responses about their recreation experiences. In the Spring of 2022, engagement at existing events focused on resident visions and big ideas for future projects or policies. Ultimately, the PRAT plan was represented at over 20 events throughout the city.

Online Engagement

Project Web Content: Regular content updates were made to the City’s website, which serves as an increasingly popular resource for information and updates regarding city-led projects.

Social Media: Ahead of major public milestones, the City posted visual graphics and imagery to promote the plan, promote public events, and gather reactions to early ideas on existing City social media platforms. These advertisements were translated into Spanish and were also posted on the City’s Engage Bozeman Bang the Table site. The site pulled 159 unique visits over the year that the platform was publicly accessible. Engage Bozeman was also used to gather feedback during a virtual public workshop, ensuring that individuals who were unable to attend the workshop could still participate at a time that was convenient to their household.



Milestone #2: Bozeman Bike your Park Day



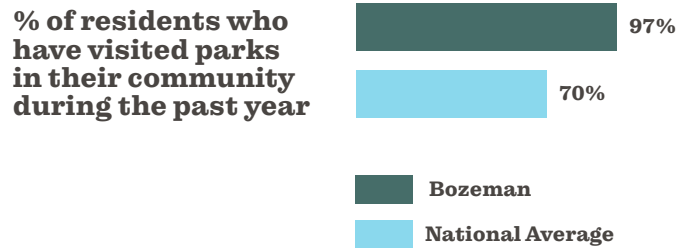
Milestone #2: GVL Trails Day Visioning



Milestone #3: Strategy Prioritizing in Parks

Statistically Valid Survey: A statistically valid paper survey was mailed to 2,500 residents across the City of Bozeman. This tool provided an important data set that represented a user group with similar demographic characteristics to the City as a whole and offered a balanced resident perspective across the City. Final results were based on 300 total surveys providing a 95% confidence level. The City also made this community survey available online to residents who had not participated in the statistically valid survey. An additional 100 people shared their existing patterns and needs for the City system.

USAGE OF PARKS Bozeman vs National Average



FACILITIES/AMENITIES

Top priority!

1. Trails, gravel or natural surface
2. On-road bike lanes or facilities
3. Pools, indoor
4. Pools, outdoor
5. Trails, paved (e.g., Path to the M)

Lack of time was the top barrier to park or trail use (18 percent)

PROGRAMS

Top priority!

1. Aquatics or swimming
2. Arts and Culture
3. Winter Recreation
4. Fitness
5. Etiquette programs for parks and trail users

Lack of awareness was the top barrier to program participation (45 percent)

Community Workshops: Due to ongoing COVID restrictions during the plan’s development, the project team made the decision to hold community workshops online, halfway through the plan process. These workshops included a short presentation and small group conversations that used the Engage Bozeman platform to help facilitate conversations and map or catalog participant ideas. The community workshops were recorded and posted on Engage Bozeman for anyone interested in participating but unable to attend during the early April meetings.

At the end of each engagement milestone, engagement feedback was synthesized and shared with them in an easily digestible and clear format that can be shared on multiple digital platforms, both internally and with the broader community.

Staff and Stakeholder Engagement

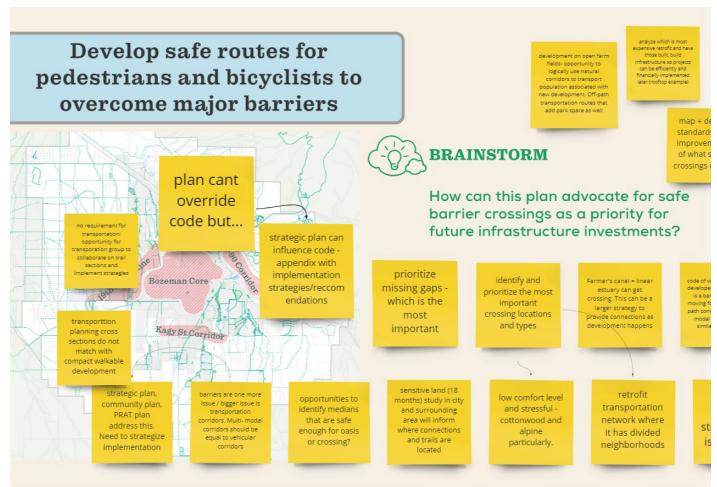
Staff engagement was essential to the success and implementation of the plan. In October, as part of the project’s kick-off, staff and stakeholders participated in a series of topical focus groups to learn about the system through the eyes of staff, partners, and city leaders. These representatives were reengaged as part of the plan vision process in June 2022 and again to help identify implementation priorities in August 2022.

Alignment with Other City Initiatives

Safe Routes to Parks: The project team also worked in parallel with the Safe Routes to Parks grant team to ensure the PRAT plan helps to reduce barriers to accessing parks and facilities. This grant was awarded to the Human Resource Development council, District IX (HRDC) in partnership with the Western Transportation Institute



October Kick-off Trail Tour with City Staff



City Stakeholders Visioning Workshop



Maintenance Conversation

(WTI) and the City of Bozeman to create and test a community liaison program to highlight systematically excluded voices. The plan worked alongside three community liaisons who are connected to different underrepresented communities including the BIPOC (Black, Indigenous, and People of Color), LatinX and disability communities. The liaisons tested a variety of tools such as targeted surveys, hosting small group conversations, organizing a walk audit, and collecting stories through one-on-one interviews.

Bang the Table: The City’s newest method of engagement and outreach is called Engage. Bozeman.net, a Bang the Table platform. This platform enabled regular project updates to the PRAT plan and served as a space for online conversations between city staff and residents. This platform was also used to share content online at milestone moments and in between.

COMMUNITY LIAISONS | CONEXIÓN COMUNITARIA



Grant Partners:



Bri Daniels

Goal: to engage the disability community, help raise voices that are often not heard or listened to and to emphasize that access and inclusion is about so much more than checking off ADA boxes

Tools:

- Survey
- Interviews/Story Telling



Luis Islas

Goal: to hear from the Latino community about the types of outdoor activities that are favored and what accessibility issues impact access to local parks

Tools:

- Front Door Conversations
- Planned a Walk Audit



Mikayla Pitts

Goal: to engage the BIPOC community and make parks and recreation programming more welcoming

Tools:

- Host Group Conversation
- Survey
- Exploring if there are events to better welcome more diverse people into the City

What have been your experiences with access and inclusion in the City of Bozeman?

SHARE YOUR STORY
by taking the
**Parks + Recreation
Accessibility Survey**

surveymonkey.com/r/ParksAccess



Access the online survey by taking a picture of this QR code with your smart phone!



At the end of the survey, sign up for more interactive storytelling opportunities!



Accessibility Survey Promotional Material

Reserva la fecha por
CAMINTOÑO

Con HRDC y la Ciudad de Bozeman para una Ruta Segura a los Parques

Auditoría comunitaria a pie

SÁBADO, 23 DE OCTOBER, 9AM



SAVE THE DATE

Join HRDC and the City of Bozeman for a Safe Routes to Parks

Community Walk Audit

SATURDAY, OCTOBER 23RD, 9AM

*¡Se proporcionará
comida y bebida!*

Empezaremos aquí:
**West College Park
2405 W. College
Bozeman, MT 59718**

FOOD AND DRINK WILL BE
PROVIDED!

y caminaremos a un parque local para evaluar si la calle es segura para caminar e identificaremos si hay alguna barrera.

Spanish speaking population promotional materials

Engagement Key Findings

Through the engagement process, the plan uncovered that the City's parks and trails provide an important oasis in the fastest growing city in Montana. Bozeman residents clearly value opportunities to connect with nature and to safely access walking and biking trails. Residents also want their parks and facilities to be inclusive places where they feel welcomed by other park users, staff, and by the design of these places and the programs within them. Residents were also aligned in their desires for special use facilities, more specifically swimming pools. Though these values are not explicitly contradictory, they span many topics, so the planning process was oriented toward finding the right balance of investments, whether they be in policy, Department capacity, or capital improvements.

The top responses from the public engagement process were related to desires for inclusion, relevant programs and amenities, safe access, nature immersion, trail connectivity, special use facilities, and park etiquette. These seven engagement themes provide an important framework for the goals and strategies outlined within this plan.

Inclusion

Many residents reported feeling uncomfortable or unsafe in their parks. Efforts to enhance physical access, lead program inclusion, and expand park policies will ensure that parks, programs, and trails are welcoming for all Bozeman residents.

Relevant Programs and Amenities

Residents continually noted their love of their park spaces and requested that same level of investment in their programs and events.

Safe Access

Fast moving and wide roadways that are difficult to cross, limited universal accessibility between homes and open spaces or buildings, inadequate access to parks and facilities for the disabled community, and difficult to reach park spaces were all identified as creating barriers to safely getting to and from these community destinations.

ENGAGEMENT BY NUMBERS (WHO AND HOW DID WE ENGAGE)

Nature Immersion

Residents enjoy the proximity to nature both within the City and outside its limits. Many residents are also excited for more nature play and educational opportunities.

Trail Connectivity

Trails not only facilitate connections between natural areas and public lands, but foster community connections as well. Residents and visitors love the existing trail network and are excited for a more connected system of pathways and trails that are connected to beloved parks and important community destinations.

Special Use Facilities

Swimming pools and aquatics programs were consistently among the top ranked needs by plan participants. The need for more water play and swimming opportunities emerged early on in the process, before the temporary closure of the Bozeman Swim Center. Other desired special use facilities included a nature center and affordable indoor fitness spaces.

Kindness

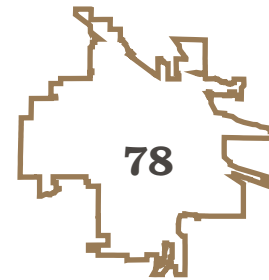
Many different audiences use Bozeman parks, and not everyone is thoughtful about the impacts their engagement with parks has on the use of others. In order for parks and trails to be fully inclusive, the City must ensure those who feel uncomfortable using these spaces are not limited by other users.



401 community surveys
(300 statistically valid)

24 disability community
Surveys

12 BIPOC surveys



78 locations mapped

45 ideas shared

1 online implementation
poll

4,537 unique site visits



2 online community
meetings

15 meetings with city,
boards, and councils

24 pop-ups at events and
in parks

**PUBLIC
ENGAGEMENT
RECORDS**

Summary of Comments from PRAT Engagement

Topic 1	Word Count 1	Topic 2	Word Count 2	Topic 3	Word Count 3	Topic 4	Word Count 4	Topic 5	Word Count 5	Total Count	Emerging Themes
Access (ADA)	98	Affordable	4	Identity	38	Access (time)	12		-	152	Inclusion
Nature	30	Environment	76	Tree	53	Native	15	Habitat	3	177	Nature Immersion
Trails	227	Connect	76	Bike	66		-		-	369	Trail Connectivity
Indoor	15	Swimming/Aquatics	38	Sports Events	36	Adventure (XC/Disc Golf, etc)	20		-	109	Special Use Facilities
Too many	13	Off leash/unleash	20	Care	26	Etiquette	11	Maintain/clean	45	115	Care
Play	29	Winter/Snow	17	New	28	Events/programs	114	Family	4	192	Maintain Relevance
Safe	90	Sidewalks	21	Crossings	47	Mobility	76		-	234	Safe Access

Question	Response
Barriers to Usage of Parks, Trails, or Facilities (answered "Something Else")	Accessible
Barriers to Usage of Parks, Trails, or Facilities (answered "Something Else")	Animal regulations not enforced
Barriers to Usage of Parks, Trails, or Facilities (answered "Something Else")	Benches, water for dogs
Barriers to Usage of Parks, Trails, or Facilities (answered "Something Else")	Bike lanes are where all the trash is swept
Barriers to Usage of Parks, Trails, or Facilities (answered "Something Else")	Close by parks are very packed and busy
Barriers to Usage of Parks, Trails, or Facilities (answered "Something Else")	Confusion about crowds parking use
Barriers to Usage of Parks, Trails, or Facilities (answered "Something Else")	Connectivity is lacking
Barriers to Usage of Parks, Trails, or Facilities (answered "Something Else")	Crowded
Barriers to Usage of Parks, Trails, or Facilities (answered "Something Else")	Desperately want another frisbee golf course because Rose Park is probably the highest trafficked park in the summer and we need to spread the crowd out to continue to grow the community.
Barriers to Usage of Parks, Trails, or Facilities (answered "Something Else")	Disc golf park at Rose Park is being overtaken by dog walkers from new construction. The park is not being maintained.
Barriers to Usage of Parks, Trails, or Facilities (answered "Something Else")	Dog feces all over
Barriers to Usage of Parks, Trails, or Facilities (answered "Something Else")	Dog poop
Barriers to Usage of Parks, Trails, or Facilities (answered "Something Else")	Dog poop
Barriers to Usage of Parks, Trails, or Facilities (answered "Something Else")	Dog poop is everywhere, should fine those that don't pick up after their dogs.
Barriers to Usage of Parks, Trails, or Facilities (answered "Something Else")	Dogs
Barriers to Usage of Parks, Trails, or Facilities (answered "Something Else")	Dogs and dog poop everywhere
Barriers to Usage of Parks, Trails, or Facilities (answered "Something Else")	Dogs off leash.

Barriers to Usage of Parks, Trails, or Facilities (answered "Something Else")	Have to cross busy streets
Barriers to Usage of Parks, Trails, or Facilities (answered "Something Else")	Homeless camps
Barriers to Usage of Parks, Trails, or Facilities (answered "Something Else")	Homeless in parks
Barriers to Usage of Parks, Trails, or Facilities (answered "Something Else")	I have a nice yard so I relax there and I have some mobility issues.
Barriers to Usage of Parks, Trails, or Facilities (answered "Something Else")	I have multiple dogs and off leash is essential to maximum enjoyment.
Barriers to Usage of Parks, Trails, or Facilities (answered "Something Else")	I play a lot of Disc golf at Rose Park, I understand that it is a city park but it has a dog/human problem since all the new apartment construction, that is a Disc golf park, not a dog poop/pee park. The grounds are infested with rodents, there are no dog poop bag dispensers, no signage explaining the concerns of flying discs. DO BETTER CITY OF BOZEMAN.
Barriers to Usage of Parks, Trails, or Facilities (answered "Something Else")	I would like to see more parks and green space and less trafficked areas p, especially around these parks. Also, it would be great to connect the parks with safe trails and not a high volume of traffic. Also, lowered speed limits to make biking on roads and trails near the roads much safer. Primary focus on walking and biking with a great reduction of motor vehicle traffic.
Barriers to Usage of Parks, Trails, or Facilities (answered "Something Else")	Interested in volleyball, racquet ball and pickle ball
Barriers to Usage of Parks, Trails, or Facilities (answered "Something Else")	Lack of handicapped parking.
Barriers to Usage of Parks, Trails, or Facilities (answered "Something Else")	Lack of lighting of parks and trails at night , for after work hours use.
Barriers to Usage of Parks, Trails, or Facilities (answered "Something Else")	Large homeless population in the park
Barriers to Usage of Parks, Trails, or Facilities (answered "Something Else")	Limited mobility
Barriers to Usage of Parks, Trails, or Facilities (answered "Something Else")	Lindley park needs new equipment and an area for kids 6 to 9 years of age.
Barriers to Usage of Parks, Trails, or Facilities (answered "Something Else")	Loose dogs on Linear Trail
Barriers to Usage of Parks, Trails, or Facilities (answered "Something Else")	More park benches near the dog pond at regional park
Barriers to Usage of Parks, Trails, or Facilities (answered "Something Else")	More pool hours

Barriers to Usage of Parks, Trails, or Facilities (answered "Something Else")	More restroom , bottom of Peets Hills
Barriers to Usage of Parks, Trails, or Facilities (answered "Something Else")	More squatters & doesn't seem to be addressed
Barriers to Usage of Parks, Trails, or Facilities (answered "Something Else")	My choices above in Q4 relate to disc golf. Rose park is the only park in Bozeman that offers disc golf, which is not convenient if you do not live close. It is not a well maintained park (its full of gophers, and has only one set of trash cans to use) and is mostly looked after by local volunteers within the disc golf community. The amenities it does not contain are: obstacles for disc golf (such as more trees, uphill/downhill shots), a variety of different golf shots, and more holes (it has 14, and most are very short).
Barriers to Usage of Parks, Trails, or Facilities (answered "Something Else")	Need more off leash dog areas
Barriers to Usage of Parks, Trails, or Facilities (answered "Something Else")	Not adaptive to wheelchairs on all trails
Barriers to Usage of Parks, Trails, or Facilities (answered "Something Else")	Not enough parking, dog poop is a problem
Barriers to Usage of Parks, Trails, or Facilities (answered "Something Else")	Not enough parking. Need a true 18 hole disc golf park of proper tournament length. The current disc golf park at Rose Park is best for beginners, too crowded, too many gopher holes that affect safety, and has many decrepit foot bridges over creeks that need immediate repair. A new disc golf park while providing a new venue for experienced players, would also allow for tournaments which add value to the local economy. Look up the Rocky Mountain disc golf championships sponsored by Subaru, held near the Bridger Bowl a few years ago (on youtube). Sadly, that property was sold and the new owners did not wish to continue disc golf. We've been lacking a challenging course ever since.
Barriers to Usage of Parks, Trails, or Facilities (answered "Something Else")	Not enough staffing at Pool
Barriers to Usage of Parks, Trails, or Facilities (answered "Something Else")	Not well maintained or clean
Barriers to Usage of Parks, Trails, or Facilities (answered "Something Else")	Off leash dogs
Barriers to Usage of Parks, Trails, or Facilities (answered "Something Else")	Off leash dogs
Barriers to Usage of Parks, Trails, or Facilities (answered "Something Else")	Off leash dogs
Barriers to Usage of Parks, Trails, or Facilities (answered "Something Else")	Off leash dogs everywhere

Barriers to Usage of Parks, Trails, or Facilities (answered "Something Else")	Open space
Barriers to Usage of Parks, Trails, or Facilities (answered "Something Else")	Parking
Barriers to Usage of Parks, Trails, or Facilities (answered "Something Else")	Parking availability at some parks
Barriers to Usage of Parks, Trails, or Facilities (answered "Something Else")	Parking lots not maintained. Parks are not meeting needs of older adult population
Barriers to Usage of Parks, Trails, or Facilities (answered "Something Else")	Parking/crowding, bathrooms, dog waste bins, leash requirements
Barriers to Usage of Parks, Trails, or Facilities (answered "Something Else")	Peets Hill/Burke Park have stopped going, too many aggressive dogs, not on leashes.
Barriers to Usage of Parks, Trails, or Facilities (answered "Something Else")	Pool space is not adequate. And people don't follow leash laws or clean up after their dogs - it makes it unappealing.
Barriers to Usage of Parks, Trails, or Facilities (answered "Something Else")	Pool too small and crowded, should expand to the west
Barriers to Usage of Parks, Trails, or Facilities (answered "Something Else")	Poor aquatic center and rec center needs to be built. Love trails and use them everyday.
Barriers to Usage of Parks, Trails, or Facilities (answered "Something Else")	Poor management of aquatics facility.
Barriers to Usage of Parks, Trails, or Facilities (answered "Something Else")	Poor parking and parks aren't as easily accessible by bike and foot as they are by car. Roadways to park are dangerous by bike or no connected sidewalks to park.
Barriers to Usage of Parks, Trails, or Facilities (answered "Something Else")	Restrooms are closed
Barriers to Usage of Parks, Trails, or Facilities (answered "Something Else")	Safety of parking lots
Barriers to Usage of Parks, Trails, or Facilities (answered "Something Else")	Sidewalks end , not safe walking with kids or pets
Barriers to Usage of Parks, Trails, or Facilities (answered "Something Else")	Sidewalks not clear of ice and snow
Barriers to Usage of Parks, Trails, or Facilities (answered "Something Else")	Sidewalks not shoveled in winter. Limited public hours at the swim center.
Barriers to Usage of Parks, Trails, or Facilities (answered "Something Else")	Sidewalks to get to the trails, parks area non-existent or not maintained well (shoveled, esp. In winter)
Barriers to Usage of Parks, Trails, or Facilities (answered "Something Else")	Some areas are crowded. Dog Parks.

Barriers to Usage of Parks, Trails, or Facilities (answered "Something Else")	Some rude people
Barriers to Usage of Parks, Trails, or Facilities (answered "Something Else")	Sometimes it is not plowed well.
Barriers to Usage of Parks, Trails, or Facilities (answered "Something Else")	Swim center hours, closed on weekends?
Barriers to Usage of Parks, Trails, or Facilities (answered "Something Else")	Swim center is taken over by swim teams, pushing out citizens for access
Barriers to Usage of Parks, Trails, or Facilities (answered "Something Else")	Swim facilities are in bad shape and major need of updating and expansion!!!
Barriers to Usage of Parks, Trails, or Facilities (answered "Something Else")	The park in our neighborhood on Cascade St. And Mineral Ave. Is completely neglected. Our HOA was maintaining this park, until it was voted for the City of Bozeman to maintain all community park in exchange for a tax increase. As stated before, this park is completely neglected. Our household often frequent the Valley Unit Park. We must cross Yellowstone Ave. To access this park, as do many others in the neighborhood. Vehicles traveling between Durston and Babcock often speed and fail to yield for pedestrians on Yellowstone Ave. And Meagher Ave. The crosswalks need to be better designated with signs, street markings, and perhaps stop signs to yield the flow of traffic to pedestrians trying to access Valley Unit Park.
Barriers to Usage of Parks, Trails, or Facilities (answered "Something Else")	The smell of dog poop along the trails is overwhelming
Barriers to Usage of Parks, Trails, or Facilities (answered "Something Else")	There are no trails on which dogs are prohibited.
Barriers to Usage of Parks, Trails, or Facilities (answered "Something Else")	There are not enough tennis courts in this town! It's crazy!
Barriers to Usage of Parks, Trails, or Facilities (answered "Something Else")	There are too many parks.
Barriers to Usage of Parks, Trails, or Facilities (answered "Something Else")	Time
Barriers to Usage of Parks, Trails, or Facilities (answered "Something Else")	Time
Barriers to Usage of Parks, Trails, or Facilities (answered "Something Else")	Toilets are often closed or not existent. People then relieve themselves in the shrubs. Even Pocatello Idaho has heated year round bathrooms in their parks.
Barriers to Usage of Parks, Trails, or Facilities (answered "Something Else")	Too cold!
Barriers to Usage of Parks, Trails, or Facilities (answered "Something Else")	Too many off leash dogs at leash only parks. Too many irresponsible dog owners that don't clean up after dogs at all parks and trails. Snowfall has become a junkyard for broken vehicles.

Barriers to Usage of Parks, Trails, or Facilities (answered "Something Else")	Too many people and off leash for dogs.
Barriers to Usage of Parks, Trails, or Facilities (answered "Something Else")	Too many people on trails
Barriers to Usage of Parks, Trails, or Facilities (answered "Something Else")	Too many people, inconsiderate trail users.
Barriers to Usage of Parks, Trails, or Facilities (answered "Something Else")	Too many unleashed dogs
Barriers to Usage of Parks, Trails, or Facilities (answered "Something Else")	Traffic(speeding)
Barriers to Usage of Parks, Trails, or Facilities (answered "Something Else")	Transportation
Barriers to Usage of Parks, Trails, or Facilities (answered "Something Else")	Trash
Barriers to Usage of Parks, Trails, or Facilities (answered "Something Else")	Trash
Barriers to Usage of Parks, Trails, or Facilities (answered "Something Else")	Unleashed dogs
Barriers to Usage of Parks, Trails, or Facilities (answered "Something Else")	Unleashed dogs
Barriers to Usage of Parks, Trails, or Facilities (answered "Something Else")	Vagrant population in warmer months, makes my wife not feel safe.
Barriers to Usage of Parks, Trails, or Facilities (answered "Something Else")	Way to many dogs off leash
Barriers to Usage of Parks, Trails, or Facilities (answered "Something Else")	We need North/South bike trails connecting Bozeman to Belgrade East of Jackrabbit.

Barriers to Usage of Parks, Trails, or Facilities (answered "Something Else")	We only have one very small disc golf course. It is constantly busy even middle of the day on weekdays we wait to tee off because there's so many players. With how much space bozeman had and rose being the busiest park on a Costigan basis during the summer should show the city we need more disc golf but the city just doesn't care that this park is used as much as the regional park. The city barely does anything with Rose Park Disc Golf Course. The mow once a season then disc golfers have to get out there and mow because the city doesn't. Both new apartment buildings on the park walk there dogs and don't pick up after there dogs poop. I usually pick up at least 4-5 bags of dog poop because people in the apartments don't pick up after there dogs. This is crazy we don't have even a 18 hole course. Even Billings has 7 courses with diamond x having 3 in just one property. Helena and Butte both have more courses and better courses than what we have in bozeman. Missoula has 3-4 courses with multiple courses in national forest areas and city parks as well. Why does Bozeman only have one extremely small course with no trees? It seems like the city doesn't care at all about one of the busiest parks in bozeman. This park is used for multiple hours for each person that uses it. Not like other parks people spend 30 minutes in then leave. We need more disc golf in bozeman because rose Park is to busy to play a lot of the times. The doubles league and bag tag league in bozeman do all of the course maintenance other than the one a summer the city mow but we can't do it all. We need help. We need more courses. We need the city to care about this
Barriers to Usage of Parks, Trails, or Facilities (answered "Something Else")	Weather
Barriers to Program Participation (answered "Something Else")	Available participant spots are so limited that they fill up within 24 hours, many months in advance. The lack of swim instruction here is worrisome
Barriers to Program Participation (answered "Something Else")	Classes being "sold out" quickly
Barriers to Program Participation (answered "Something Else")	Classes fill too fast
Barriers to Program Participation (answered "Something Else")	Covid
Barriers to Program Participation (answered "Something Else")	Covid
Barriers to Program Participation (answered "Something Else")	Difficult to get into summer camps
Barriers to Program Participation (answered "Something Else")	Few programs for young kids, spots fill up quickly
Barriers to Program Participation (answered "Something Else")	Getting kids scheduled before it fills up for the summer camps

Barriers to Program Participation (answered "Something Else")	Homeless population
Barriers to Program Participation (answered "Something Else")	Hours are not good
Barriers to Program Participation (answered "Something Else")	Housebound
Barriers to Program Participation (answered "Something Else")	I would love more swim services (lessons, recreation, updated facilities) and due to staffing these are just not available.
Barriers to Program Participation (answered "Something Else")	Kids are older now
Barriers to Program Participation (answered "Something Else")	Kids aren't old enough yet
Barriers to Program Participation (answered "Something Else")	Kids classes fill up fast
Barriers to Program Participation (answered "Something Else")	Lack of competitive opportunities for sport activities
Barriers to Program Participation (answered "Something Else")	Lack of staff, canceled classes
Barriers to Program Participation (answered "Something Else")	More enrollment space, stop opening so early for enrollment
Barriers to Program Participation (answered "Something Else")	No access to internet
Barriers to Program Participation (answered "Something Else")	No interest
Barriers to Program Participation (answered "Something Else")	Not aware of programs
Barriers to Program Participation (answered "Something Else")	Not enough programs like swimming lessons
Barriers to Program Participation (answered "Something Else")	Not enough programs offered and they get full too quickly to get registered. Plus, they are primarily offered on the east side of the city, and i live on the west side.
Barriers to Program Participation (answered "Something Else")	Not enough space, they book up
Barriers to Program Participation (answered "Something Else")	Poor advertising, not enough classes like swim lessons. They fill-up fast.
Barriers to Program Participation (answered "Something Else")	Poor lighting

Barriers to Program Participation (answered "Something Else")	Programs fill up too fast and it's hard to plan that far in advance.
Barriers to Program Participation (answered "Something Else")	Programs like the children's sports options allowed too many children to sign up for each session, instructors did not have specialized knowledge of the sport, and with too many kids no one is able to get a quality product... it was just a big play date and my child was uninterested in returning
Barriers to Program Participation (answered "Something Else")	Reduced hours at the swim center. Swim facilities not meeting the community's needs.
Barriers to Program Participation (answered "Something Else")	Reduction in lap swimming lanes, bulkhead dividing the pool in half of the year
Barriers to Program Participation (answered "Something Else")	Rose park needs to have dog doo disposal service and signs for owners to pick up after dogs. Needs water and mowing.
Barriers to Program Participation (answered "Something Else")	Schedule
Barriers to Program Participation (answered "Something Else")	The city does not communicate well what is offered or happening.
Barriers to Program Participation (answered "Something Else")	They fill
Barriers to Program Participation (answered "Something Else")	They fill too fast
Barriers to Program Participation (answered "Something Else")	Time
Barriers to Program Participation (answered "Something Else")	Too many parks. Money could be better spent elsewhere
Barriers to Program Participation (answered "Something Else")	Travel out of town.
Barriers to Walking or Biking for Recreation or to Access City Parks and Facilities (answered "Something Else")	Absence of bike lanes down town. As an avid cyclist new to Montana I can't believe how little biking infrastructure there is. I was surprise to read there are existing bike lanes!
Barriers to Walking or Biking for Recreation or to Access City Parks and Facilities (answered "Something Else")	Annoying and discourteous bicyclists.
Barriers to Walking or Biking for Recreation or to Access City Parks and Facilities (answered "Something Else")	Bike lanes end abruptly. No connections on trails

Barriers to Walking or Biking for Recreation or to Access City Parks and Facilities (answered "Something Else")	Bike lanes need to be swept for debris, can cause injury to bikers.
Barriers to Walking or Biking for Recreation or to Access City Parks and Facilities (answered "Something Else")	Bike lanes not connected
Barriers to Walking or Biking for Recreation or to Access City Parks and Facilities (answered "Something Else")	Drivers try to hit bike commuters
Barriers to Walking or Biking for Recreation or to Access City Parks and Facilities (answered "Something Else")	Health issues of spouse ...limits my time to be away from home for very long amounts of time. I enjoy the trails, gardening and biking in free time...going to learn how to play pickle ball!
Barriers to Walking or Biking for Recreation or to Access City Parks and Facilities (answered "Something Else")	Icy sidewalks
Barriers to Walking or Biking for Recreation or to Access City Parks and Facilities (answered "Something Else")	Icy sidewalks
Barriers to Walking or Biking for Recreation or to Access City Parks and Facilities (answered "Something Else")	Lacing in east west route options out of the roadway for cyclist
Barriers to Walking or Biking for Recreation or to Access City Parks and Facilities (answered "Something Else")	Lack of dog etiquette.
Barriers to Walking or Biking for Recreation or to Access City Parks and Facilities (answered "Something Else")	Need more bike lanes
Barriers to Walking or Biking for Recreation or to Access City Parks and Facilities (answered "Something Else")	Need parking lots with easy access(ADA), more benches on paths, wider paths.
Barriers to Walking or Biking for Recreation or to Access City Parks and Facilities (answered "Something Else")	Not enough disc golf
Barriers to Walking or Biking for Recreation or to Access City Parks and Facilities (answered "Something Else")	Off leash dogs

Barriers to Walking or Biking for Recreation or to Access City Parks and Facilities (answered "Something Else")	Off leash dogs
Barriers to Walking or Biking for Recreation or to Access City Parks and Facilities (answered "Something Else")	Parked cars block the bike lanes
Barriers to Walking or Biking for Recreation or to Access City Parks and Facilities (answered "Something Else")	Poor city snow removal on streets, hard to walk, etc.
Barriers to Walking or Biking for Recreation or to Access City Parks and Facilities (answered "Something Else")	Sidewalks end
Barriers to Walking or Biking for Recreation or to Access City Parks and Facilities (answered "Something Else")	Sidewalks not clear of ice and snow
Barriers to Walking or Biking for Recreation or to Access City Parks and Facilities (answered "Something Else")	Snow
Barriers to Walking or Biking for Recreation or to Access City Parks and Facilities (answered "Something Else")	Some places in town have decent bike paths, but as a whole, the streets aren't set up to be very bike friendly
Barriers to Walking or Biking for Recreation or to Access City Parks and Facilities (answered "Something Else")	Too busy
Barriers to Walking or Biking for Recreation or to Access City Parks and Facilities (answered "Something Else")	Too crowded, therefore dangerous
Barriers to Walking or Biking for Recreation or to Access City Parks and Facilities (answered "Something Else")	Too many dogs
Barriers to Walking or Biking for Recreation or to Access City Parks and Facilities (answered "Something Else")	Trails are uneven some have large gravel They are not smooth I am afraid of injuries to feet or knees
Barriers to Walking or Biking for Recreation or to Access City Parks and Facilities (answered "Something Else")	Trails not connected

Barriers to Walking or Biking for Recreation or to Access City Parks and Facilities (answered "Something Else")	Unleashed dogs that are not kept under control.
Barriers to Walking or Biking for Recreation or to Access City Parks and Facilities (answered "Something Else")	Update trails/paths
Need or desire for additional programs (answered "Something Else")	Adequate maintenance and replacement of parkland vegetation to replace damaged land from construction
Need or desire for additional programs (answered "Something Else")	Adult education
Need or desire for additional programs (answered "Something Else")	Continued XC trail growing, ski
Need or desire for additional programs (answered "Something Else")	Disc Golf
Need or desire for additional programs (answered "Something Else")	Disc golf for adults and for youth.
Need or desire for additional programs (answered "Something Else")	Disc golf for all ages! Programs and events would include things like disc golf leagues, tournaments, fundraisers, and skill contests (such as a putting competition).
Need or desire for additional programs (answered "Something Else")	Disc golf. A class or instruction from local disc golf club, Headwaters Disc Golf Club, on how to play the sport and the rules.
Need or desire for additional programs (answered "Something Else")	Dog poop everywhere.
Need or desire for additional programs (answered "Something Else")	Dogs not on leash
Need or desire for additional programs (answered "Something Else")	Indoor shooting range
Need or desire for additional programs (answered "Something Else")	Litter pick up days
Need or desire for additional programs (answered "Something Else")	No mountain bike time share
Need or desire for additional programs (answered "Something Else")	Skateparks
Need or desire for additional programs (answered "Something Else")	Use for group events (pavilions).
Need or desire for additional programs (answered "Something Else")	Volunteer opportunity

GOAL	ACTION	Who can help?	Grand Total			
			Enhance	Expand	Evolve	Total
Cared For	Have funding to pay staff to care for our parks landscaping. Create volunteer groups to help tend gardens. Have more edible community gardens.	City staff/ commissioner, Valley of the Flowers Project Volunteer opportunities	1	0	0	1
Cared For	Increase Parks Department staff to fill gaps in programming, maintenance, and park planning.	awareness, Earth Day cleanup	0	1	0	1
Cared For	Restore Bozeman Creek to natural open waterway through downtown with walking path and trees and waterway habitat		0	0	1	1
Cared For	More Programming for under 5 years, I see very little in the categories for those under 5		0	0	1	1
Cared For	"Mommy/Daddy time" classes		1	0	0	1
Cared For	Enhance collaboration with City partners and neighborhoods.		1	0	0	1
Cared For	Parks and rec foundation		1	0	0	1
Cared For	Have a year-round volunteer program to address trash and vandalism		1	0	0	1
Cared For	Create a strategy for ongoing outreach to ensure community members have a voice in the various projects identified by the PRAT plan.		0	0	0	0
Cared For	Communicate back to residents about how their contributions to the Parks and Trails District are being invested in public open spaces.		0	0	0	0
Connected	Connect southwest Bozeman to northeast Bozeman using a citywide "super route" trail system.	Gallatin Valley Land Trust	2	3	2	7
Connected	Use linear open spaces along waterways to connect the active transportation network into parks and open spaces.	MSU Engineering Capstone Program, GVL, HRDC	2	3	2	7
Connected	Make pedestrian and bike crossings over major roadways and intersections safer.	MSU Transportation Research Dept	3	2	0	5
Connected	More sidewalks		1	1	0	2
Connected	Wayfinding (Kagy), especially in neighborhoods, more nature, unclear what parks would be interesting to MSU students, more art and culture/education. A lot of MSU students use campus or go to mountains		1	0	0	1
Connected	People who work in Big Sky come to Walmart to do errands, not clear where public parks are (especially dog park and beach/swimming), need maps and signs		1	0	0	1
Connected	Introduce more amenities, like lighting, water fountains, and benches to trails and linear parks.		1	0	0	1
Connected	Connect downtown north along where Gallig. crosses Main st (wayfinding) - (map)		1	0	0	1

Connected	Do a better job of tying trails together! (map)		1	0	0	1
Connected	increase parkland downtown so events can spill over with green spaces and vice versa	DBA, city capital investments				1
Connected	lincoln trail easement from water tower (burke park) to MSU - strategic East-West Connector					1
Connected	Prioritize safe and welcoming east-west connections along roadways (examples include Koch Street, Cascade Street, and Annie Street).		1	0	0	1
Connected	Connect to Sourdough		0	1	0	1
Fun	Increase and improve park entrances and trails in parks.	Gallatin Valley Land Trust	1	1	0	2
Fun	Build community facilities to support recreation and aquatics equitably across the city, including a new facility in the west side of Bozeman.		1	0	4	5
Fun	Water park/amusement park		0	0	2	2
Fun	Playground (cannot use school playground during the day)		0	0	2	2
Fun	More fairs		0	0	1	1
Fun	Organize frequent family, kid runs		0	0	1	1
Fun	Expand indoor and outdoor programs for all seasons by renovating and retrofitting existing facilities.		1	0	0	1
Fun	Programming for teens! Rec sports, pick up games, outdoors		1	0	0	1
Fun	Aquatic facilities indoor + out for kids and adults, splash pads, water access		0	2	0	2
Fun	More swings at Lindley		0	1	0	1
Fun	Fire Truck playground		0	1	0	1
Fun	More playgrounds like Dinosaur park		0	1	0	1
Fun	Bigger parks that you can explore: trees, nature (map)		0	0	0	0
Fun	Pickleball + new pool on West side (map)		0	0	0	0
Fun	Use school courts publically (map)		0	0	0	0
Fun	Broaden outreach and communications to Bozeman residents.		0	0	0	0
Resilient	Partner with MSU engineering Capstone Program	andersl@montana.edu (Anders Larsson)	0	1	0	1
Resilient	Create environmental standards for managing natural areas.	Bozeman City Council	4	0	1	5
Resilient	Grow nature play in parks.	GLVT	0	2	0	2
Resilient	Daylight creeks (instead of just waterway setbacks, require actual restoration from developers), celebrate creeks, private ownership of creeks is issue - creeks last remaining in-city habitat for a lot of wildlife	GVLVT	1	0	0	1
Resilient	Expand tree canopy to reduce the impacts of urban heat island.	US. Forest Service	1	3	1	5
Resilient	Create more community edible gardens, adopt a zero waste resolution, support valley of the Flowers Projects, BYO bag for change	Valley of the Flowers Project	1	0	0	1

Resilient	<i>Strategically acquire land that includes critical habitats to protect native and migratory species.</i>		1	3	0	4
Resilient	<i>stop watering lawns, plant gardens!</i>		1	0	0	1
Resilient	<i>Make Main st downtown not a through-route for heavy trucks (local delivery only)</i>		0	1	0	2
Resilient	<i>Evolve Mandeville Creek (map)</i>		0	0	0	0
Resilient	<i>Partnership with save gallatin watershed council</i>		0	0	0	0
Resilient	<i>community events to talk about resilience in parks</i>	<i>Lorea simentanca, rachel hieks</i>				1
Resilient	<i>drought tolerant garden space in an existing park</i>	<i>Parks, water conservation</i>				1
Resilient	<i>Expand nature-based classes and events.</i>		0	0	0	0
Safe	<i>Prioritize park land acquisition in low-income neighborhoods and communities with limited park access.</i>	<i>Housing + Land Trusts</i>	2	3	1	6
Safe	<i>Create and communicate park etiquette guidelines to ensure all feel welcomed and safe in parks, facilities and trails.</i>		2	0	0	2
Safe	<i>Create clear and consistent wayfinding in at park entrances, in facilities, and along trails.</i>		1	0	0	1
Safe	<i>Bozeman sports park - wife was hit by ball on trail that runs perpendicular to field - can the city put up netting behind goals to protect walkers</i>		1	0	0	1
Safe	<i>enforce: no loud exhaust systems on loud cars and trucks with altered mufflers</i>		1	0	0	1
Safe	<i>having bus system be more frequently would help MSU students explore more of BZN (exchange student with no bike or car)</i>		1	0	0	1
Safe	<i>Make all park spaces, facilities, and trails universally accessible.</i>		1	0	0	1
Safe	<i>Parks map at every park... "this playground is too busy? Try ____"</i>		1	0	0	1
Safe	<i>Address bike intersections on the bike lane of tamarack and Rouse, 7th and oak, tunnels, bridges</i>		1	0	0	1
Safe	<i>Make facilities safer</i>		1	0	0	1
Safe	<i>Create design and maintenance standards across all parks to ensure they are well designed and well cared for.</i>		0	0	0	0
Safe	<i>19th crossing (map)</i>		0	0	0	0
Safe	<i>Safety near Bozeman Pond (map)</i>		0	0	0	0
Safe	<i>Create an online "suggestion box" for people to pin their ideas or maintenance concerns onto a platform</i>					1
Safe	<i>Promote helmet safety for motrcycles/bicycles</i>	<i>signs/posters</i>				1
Safe	<i>ensure a "people presence" in parks to decrease/prevent vandalism as its occuring in rural trailheads. Work together as a community.</i>					1
	TOTAL		43	30	19	100

SurveyTool:

Tool Status	Published
Visitors	34
Contributors	6
Registered	6
Unverified	0
Anonymous	0
Admin	0



Demographics Graphs Below

Survey Responses Graph

*special characters like '&' will be removed from options

Goal #1: Connected	Connect and experience all that Bozeman has to offer.	
	Connect southwest Bozeman to northeast Bozeman using a citywide "super route" trail system.	2.17
	Make pedestrian and bike crossings over major roadways and intersections safer.	2.83
	Use linear open spaces along waterways to connect the active transportation network into parks and open spaces.	3
	Introduce more amenities, like lighting, water fountains, and benches to trails and linear parks.	3.5
	Prioritize safe and welcoming east-west connections along roadways (examples include Koch Street, Cascade Street, and Annie Street).	3.5

Goal #2: Fun and Inviting	Invest in alignment with changing community needs and trends.	
	Expand indoor and outdoor programs for all seasons by renovating and retrofitting existing facilities.	1.5
	Build community facilities to support recreation and aquatics equitably across the city, including a new facility in the west side of Bozeman.	2.33
	Increase and improve park entrances and trails in parks.	2.83
	Broaden outreach and communications to Bozeman residents.	3.33

Goal #3: Loved	Increase organization capacity to benefit the community.	
	Increase Parks Department staff to fill gaps in programming, maintenance, and park planning.	2.17
	Create a strategy for ongoing outreach to ensure community members have a voice in the various projects identified by the PRAT plan.	2.17
	Enhance collaboration with City partners and neighborhoods.	2.83
	Communicate back to residents about how their contributions to the Parks and Trails District are being invested in public open spaces.	2.83

Goal #4: Safe and Accessible	Unify and provide safe, equitable access to all.	
	Prioritize park land acquisition in low-income neighborhoods and communities with limited park access.	2.33
	Make all park spaces, facilities, and trails universally accessible.	2.83
	Create clear and consistent wayfinding in at park entrances, in facilities, and along trails.	3.17

Create design and maintenance standards across all parks to ensure they are well designed and well cared for.	3.33
Create and communicate park etiquette guidelines to ensure all feel welcomed and safe in parks, facilities and trails.	3.33

Goal #5: ResilientAdapt to changing environmental pressures.	
Acquire land that includes critical habitats to protect native and migratory species.	1.67
Create environmental standards for managing natural areas.	2.83
Expand tree canopy to reduce the impacts of urban heat island.	2.83
Expand nature-based classes and events.	3.17
Grow nature play in parks.	4.5

DEMOGRAPHIC ANALYSIS of Contributors - Based on Sign-up form responses

****special characters like '&' will be removed from options***

With which racial or ethnic group(s) do you identify?	
White	6

What year were you born?	
1993	2
1961	1
1967	1
1957	1
1974	1

Which quadrant do you live in?	
Northeast NE	3
Southeast SE	3

Do you have a disability?	
No	6

With which gender do you identify?	
Male	3
Female	3

Do you rent or own your primary residence?	
Rent	2
Own	4

City's Parks, Recreation and Active Transportation Priorities

Dec 3, 2021 to Nov 29, 2022

Date of contribution			
	Goal #1: Connected Connect and experience all that Bozeman has to offer.	What other ways should the City be more connected?	Goal #2: Fun and Inviting Invest in alignment with changing community needs and trends.
Sep 30 22 12:06:04 PM	<p>Connect southwest Bozeman to northeast Bozeman using a citywide "super route" trail system., Prioritize safe and welcoming east-west connections along roadways (examples include Koch Street, Cascade Street, and Annie Street)., Use linear open spaces along waterways to connect the active transportation network into parks and open spaces., Make pedestrian and bike crossings over major roadways and intersections safer., Introduce more amenities, like lighting, water fountains, and benches to trails and linear parks.</p>	<p>Trails across town and around the county that are bike, walk, 1 wheel etc friendly and away from the roadways. Promote alternative transportation!</p>	<p>Expand indoor and outdoor programs for all seasons by renovating and retrofitting existing facilities., Build community facilities to support recreation and aquatics equitably across the city, including a new facility in the west side of Bozeman., Broaden outreach and communications to Bozeman residents., Increase and improve park entrances and trails in parks.</p>
Oct 03 22 12:30:17 PM	<p>Connect southwest Bozeman to northeast Bozeman using a citywide "super route" trail system., Use linear open spaces along waterways to connect the active transportation network into parks and open spaces., Introduce more amenities, like lighting, water fountains, and benches to trails and linear parks., Make pedestrian and bike crossings over major roadways and intersections safer., Prioritize safe and welcoming east-west connections along roadways (examples include Koch Street, Cascade Street, and Annie Street).</p>		<p>Expand indoor and outdoor programs for all seasons by renovating and retrofitting existing facilities., Build community facilities to support recreation and aquatics equitably across the city, including a new facility in the west side of Bozeman., Broaden outreach and communications to Bozeman residents., Increase and improve park entrances and trails in parks.</p>
Oct 05 22 6:12:54 AM	<p>Use linear open spaces along waterways to connect the active transportation network into parks and open spaces., Make pedestrian and bike crossings over major roadways and intersections safer., Prioritize safe and welcoming east-west connections along roadways (examples include Koch Street, Cascade Street, and Annie Street)., Connect southwest Bozeman to northeast Bozeman using a citywide "super route" trail system., Introduce more amenities, like lighting, water fountains, and benches to trails and linear parks.</p>	<p>Don't let developers build trails that don't line up or drop off curbs without ramps.</p>	<p>Increase and improve park entrances and trails in parks., Expand indoor and outdoor programs for all seasons by renovating and retrofitting existing facilities., Build community facilities to support recreation and aquatics equitably across the city, including a new facility in the west side of Bozeman., Broaden outreach and communications to Bozeman residents.</p>

<p>Oct 19 22 7:26:24 AM</p>	<p>Make pedestrian and bike crossings over major roadways and intersections safer., Connect southwest Bozeman to northeast Bozeman using a citywide "super route" trail system., Introduce more amenities, like lighting, water fountains, and benches to trails and linear parks., Prioritize safe and welcoming east-west connections along roadways (examples include Koch Street, Cascade Street, and Annie Street)., Use linear open spaces along waterways to connect the active transportation network into parks and open spaces.</p>		<p>Expand indoor and outdoor programs for all seasons by renovating and retrofitting existing facilities., Increase and improve park entrances and trails in parks., Broaden outreach and communications to Bozeman residents., Build community facilities to support recreation and aquatics equitably across the city, including a new facility in the west side of Bozeman.</p>
<p>Oct 22 22 5:20:16 PM</p>	<p>Introduce more amenities, like lighting, water fountains, and benches to trails and linear parks., Use linear open spaces along waterways to connect the active transportation network into parks and open spaces., Connect southwest Bozeman to northeast Bozeman using a citywide "super route" trail system., Prioritize safe and welcoming east-west connections along roadways (examples include Koch Street, Cascade Street, and Annie Street)., Make pedestrian and bike crossings over major roadways and intersections safer.</p>	<p>pedestrian and bike bridges over RR tracks</p>	<p>Build community facilities to support recreation and aquatics equitably across the city, including a new facility in the west side of Bozeman., Increase and improve park entrances and trails in parks., Expand indoor and outdoor programs for all seasons by renovating and retrofitting existing facilities., Broaden outreach and communications to Bozeman residents.</p>
<p>Nov 28 22 10:28:44 AM</p>	<p>Make pedestrian and bike crossings over major roadways and intersections safer., Connect southwest Bozeman to northeast Bozeman using a citywide "super route" trail system., Prioritize safe and welcoming east-west connections along roadways (examples include Koch Street, Cascade Street, and Annie Street)., Introduce more amenities, like lighting, water fountains, and benches to trails and linear parks., Use linear open spaces along waterways to connect the active transportation network into parks and open spaces.</p>	<p>adding bike lanes to all major roadways, especially between campus and downtown to give students a better option when going downtown.</p>	<p>Expand indoor and outdoor programs for all seasons by renovating and retrofitting existing facilities., Build community facilities to support recreation and aquatics equitably across the city, including a new facility in the west side of Bozeman., Broaden outreach and communications to Bozeman residents., Increase and improve park entrances and trails in parks.</p>

What other ways should the City adapt to changing trends?	Goal #3: LovedIncrease organization capacity to benefit the community.	What other resources or tools does the City need to support the community?	Goal #4: Safe and AccessibleUnify and provide safe, equitable access to all.
Alternative transportation	Increase Parks Department staff to fill gaps in programming, maintenance, and park planning., Create a strategy for ongoing outreach to ensure community members have a voice in the various projects identified by the PRAT plan., Enhance collaboration with City partners and neighborhoods., Communicate back to residents about how their contributions to the Parks and Trails District are being invested in public open spaces.	Create policies that address alternative transportation and don't wait for other city trends to come here-think ahead and creatively.	Prioritize park land acquisition in low-income neighborhoods and communities with limited park access., Create and communicate park etiquette guidelines to ensure all feel welcomed and safe in parks, facilities and trails., Make all park spaces, facilities, and trails universally accessible., Create design and maintenance standards across all parks to ensure they are well designed and well cared for., Create clear and consistent wayfinding in at park entrances, in facilities, and along trails.
	Create a strategy for ongoing outreach to ensure community members have a voice in the various projects identified by the PRAT plan., Communicate back to residents about how their contributions to the Parks and Trails District are being invested in public open spaces., Increase Parks Department staff to fill gaps in programming, maintenance, and park planning., Enhance collaboration with City partners and neighborhoods.		Create and communicate park etiquette guidelines to ensure all feel welcomed and safe in parks, facilities and trails., Make all park spaces, facilities, and trails universally accessible., Prioritize park land acquisition in low-income neighborhoods and communities with limited park access., Create clear and consistent wayfinding in at park entrances, in facilities, and along trails. , Create design and maintenance standards across all parks to ensure they are well designed and well cared for.
	Increase Parks Department staff to fill gaps in programming, maintenance, and park planning., Create a strategy for ongoing outreach to ensure community members have a voice in the various projects identified by the PRAT plan., Communicate back to residents about how their contributions to the Parks and Trails District are being invested in public open spaces., Enhance collaboration with City partners and neighborhoods.	Big ideas, big money from those that are here.	Create clear and consistent wayfinding in at park entrances, in facilities, and along trails. , Create design and maintenance standards across all parks to ensure they are well designed and well cared for., Prioritize park land acquisition in low-income neighborhoods and communities with limited park access., Create and communicate park etiquette guidelines to ensure all feel welcomed and safe in parks, facilities and trails., Make all park spaces, facilities, and trails universally accessible.

	<p>Enhance collaboration with City partners and neighborhoods., Increase Parks Department staff to fill gaps in programming, maintenance, and park planning., Communicate back to residents about how their contributions to the Parks and Trails District are being invested in public open spaces., Create a strategy for ongoing outreach to ensure community members have a voice in the various projects identified by the PRAT plan.</p>		<p>Prioritize park land acquisition in low-income neighborhoods and communities with limited park access., Create design and maintenance standards across all parks to ensure they are well designed and well cared for., Make all park spaces, facilities, and trails universally accessible., Create clear and consistent wayfinding in at park entrances, in facilities, and along trails. , Create and communicate park etiquette guidelines to ensure all feel welcomed and safe in parks, facilities and trails.</p>
<p>better enforcement of car traffic at intersections</p>	<p>Communicate back to residents about how their contributions to the Parks and Trails District are being invested in public open spaces., Enhance collaboration with City partners and neighborhoods., Create a strategy for ongoing outreach to ensure community members have a voice in the various projects identified by the PRAT plan., Increase Parks Department staff to fill gaps in programming, maintenance, and park planning.</p>	<p>Adjust UDC codes to require a minimum of pocket parks or open space that is cared for by the HOA and or hotel/office building. Change UDC coding for B3 that requires no open space to a zoning that does require pocket outdoor spaces for climate control and mental health. Also deny all cash-in-lieu of parks until the state law changes to reflect current market value.</p>	<p>Create clear and consistent wayfinding in at park entrances, in facilities, and along trails. , Make all park spaces, facilities, and trails universally accessible., Create and communicate park etiquette guidelines to ensure all feel welcomed and safe in parks, facilities and trails., Create design and maintenance standards across all parks to ensure they are well designed and well cared for., Prioritize park land acquisition in low-income neighborhoods and communities with limited park access.</p>
<p>add more trash bins for dog waste on the galligator trail and peets hill. It would be wonderful to have a new outdoor pool. I would love to know that green spaces are being thoughtfully added to each new housing development. COMMUNITY GARDENS. We need more community garden spaces placed throughout the community.</p>	<p>Create a strategy for ongoing outreach to ensure community members have a voice in the various projects identified by the PRAT plan., Increase Parks Department staff to fill gaps in programming, maintenance, and park planning., Enhance collaboration with City partners and neighborhoods., Communicate back to residents about how their contributions to the Parks and Trails District are being invested in public open spaces.</p>	<p>We all just want to know that with the increase of population the city greenspaces and surrounding area is being protected and added to.</p>	<p>Prioritize park land acquisition in low-income neighborhoods and communities with limited park access., Make all park spaces, facilities, and trails universally accessible., Create design and maintenance standards across all parks to ensure they are well designed and well cared for., Create clear and consistent wayfinding in at park entrances, in facilities, and along trails. , Create and communicate park etiquette guidelines to ensure all feel welcomed and safe in parks, facilities and trails.</p>

What other ways can parks, trails and programs be safer and more accessible?	Goal #5: Resilient Adapt to changing environmental pressures.	What other resiliency measures should the City undertake to adapt to a changing environment?	Which quadrant do you live in?	What year were you born?	With which racial or ethnic group(s) do you identify?	Do you have a disability?
Keep trails away from roadways	Acquire land that includes critical habitats to protect native and migratory species., Expand tree canopy to reduce the impacts of urban heat island., Create environmental standards for managing natural areas., Expand nature-based classes and events., Grow nature play in parks.	Ensure affordable housing so that our open spaces are not becoming camp grounds.	Southeast (SE)	1967	White	No
	Acquire land that includes critical habitats to protect native and migratory species., Expand tree canopy to reduce the impacts of urban heat island., Create environmental standards for managing natural areas., Expand nature-based classes and events., Grow nature play in parks.		Northeast (NE)	1957	White	No
	Acquire land that includes critical habitats to protect native and migratory species., Create environmental standards for managing natural areas., Expand tree canopy to reduce the impacts of urban heat island., Expand nature-based classes and events., Grow nature play in parks.		Southeast (SE)	1974	White	No

	Expand tree canopy to reduce the impacts of urban heat island., Acquire land that includes critical habitats to protect native and migratory species., Expand nature-based classes and events., Create environmental standards for managing natural areas., Grow nature play in parks.		Southeast (SE)	1993	White	No
Widen the brush around natural pathways, keep bike lanes off streets- and instead use multi-use pathways.	Expand nature-based classes and events., Grow nature play in parks., Create environmental standards for managing natural areas., Acquire land that includes critical habitats to protect native and migratory species., Expand tree canopy to reduce the impacts of urban heat island.	Advocate changing the UDC to require developers to design around their existing mature trees and shrubs and disallow lot leveling such as Bridger View which was full of lilacs, flowering crab tree, and spruces, etc. Cutting the trees and leveling the land eliminates large amounts of carbon sequestration and adds Carbon to the atmosphere.	Northeast (NE)	1961	White	No
I would love to hear that disabled people were asked this question. As I am not disabled I do not know the answer nor do I feel qualified in answering for them.	Acquire land that includes critical habitats to protect native and migratory species., Create environmental standards for managing natural areas., Expand nature-based classes and events., Expand tree canopy to reduce the impacts of urban heat island., Grow nature play in parks.	Plant native plant species and reduce grass that needs mowing/watering. We live in an area that has limited water supply and seeing grass being watered kills me. I would love to see parks with more native grass species/grass that is drought resistant.	Northeast (NE)	1993	White	No

DISABILITY SURVEY

Please rate your experience when it comes to access around getting to and from parks in Bozeman?				Please provide a reason and/or examples for your opinion from the last question.	Please rate your experiences with accessibility within the parks around Bozeman?			Please provide a reason or two and examples for your opinion from the last question.	Please rate your experience with the inclusivity of the classes, programs, and events offered through Parks and Recreation of Bozeman?				
Very high quality	High quality	Low quality	Very low quality	Open-Ended Response	Very high quality	High quality	Low quality	Very low quality	Open-Ended Response	Very high quality	High quality	Low quality	Very low quality
	High quality			I think that the side walls are well maintained and roads are well kept. The only thing that I would like to see in the future is the Main Street to Mountain Trails paved instead of gravel. I think that people don't use these trails as much because of it.		High quality			There are safe and easy access to most of the parks in Bozeman.		High quality		
		Low quality		Really we just moved here. My son is afraid to ride his bike to parks; too much traffic.		High quality			Nice parks, but need more swimming opportunities.				Low quality
				Too much emphasis on car infrastructure and not enough on alternative methods of transportation -- biking, walking, public transport which has resulted in more motor vehicle traffic rather than alleviating it (recognizing there has been a huge influx of people moving here that is also contributing to the problem -- all the more reason to encourage other forms of transportation).		High quality							
		Low quality		Roads are not conducive to non-motorized traffic. Rules/laws are poorly enforced									
		Low quality		I find that parking seems to be the biggest issue			Low quality		There isn't a lot of inclusion for disabled people		High quality		
	High quality			Easy to access one park, not easy to go between parks on foot		High quality			Accessible		High quality		
		Low quality		Bike lanes end abruptly, not enough shared use paths, no physical barrier between bike lanes and traffic.		High quality			Well maintained and many activities				

Please provide a reason or two and examples for your opinion from the last question.	What is your level of satisfaction around options for active transportation (cycling, walking, using a mobility assist device) within the City of Bozeman?				Please provide a reason or two and examples for your opinion from the last question.	Please share any other issues or concerns that you have around access or inclusivity to the City of Bozeman's Parks & Recreation services.
Open-Ended Response	Very satisfied	Satisfied	Dissatisfied	Very dissatisfied	Open-Ended Response	Open-Ended Response
They were friendly and welcoming every time I have participated and I have recommended to many of my friends.		Satisfied			I think they have done a good job, but to what I have said earlier, I think they should consider making the Main Street to Mountain Trails paved.	
We haven't had much opportunity yet, but how do the deaf get interpreters so they can get equal access?		Satisfied			Still new at this - moved here 3months ago	Please please please use interpreters for equal access for the deaf
			Dissatisfied		See answer to question #2. There are also little to no bike lanes heading north/south just west of town -- like along 7th or 19th Avenues and multiuse paths are not conducive to commuting by bike as cyclists on these are lawfully considered the same as pedestrians and need to stop or at least slow down at every crossing. There also does not seem to be any deference given to bicycle riders with bike lanes being shut down for golf tournaments (on Kagy), temporary road signs being placed in the bike lanes and the lanes not being cleared of snow and/or debris on a regular basis (that last goes for bike paths as well).	Many law enforcement officers and city officials seem to have little concern for cyclists' safety and the inherent dangers they face when riding on the roads. Police seem more concerned with citing riders for not stopping (and putting a foot down) at stop signs even when the cyclists have made a concerted effort to ensure there was no traffic coming in the other direction. And they don't seem to know the laws or care to enforce them on motorists who blatantly disregard traffic ordinances (such as parking in the bike lanes) putting cyclists at additional risk.
					Roads are not conducive to non-motorized traffic. Rules/laws are poorly enforced. Cross walks are often blocked by vehicles wanting to make a right on red. Bike lanes are poorly thought out.	
I haven't participated in any that I know of			Dissatisfied		Inaccessible buildings that were build before the ADA	
Do not have experience with Parks and Rec events, but appear high quality		Satisfied			Major roads and lack of sidewalks	N/A Would love to see well developed shared use paths between all the new communities and the downtown. Paths should also push toward Belgrade, Manhattan, Livingston, and Three Forks.
			Dissatisfied		Bike lanes narrow, need more traffic calming, need to change the way motorists view cyclists, runners, and rollers.	

Please share any suggestions that you have to help improve access and inclusivity to the City of Bozeman's Parks & Recreation services.

Open-Ended Response

Post that interpreters will be made available on request

Stop trying to increase population without thought to issues.

More wide sidewalks and Main Street to Mountains trails between parks

Please rate your experience when it comes to access around getting to and from parks in Bozeman?	Please provide a reason and/or examples for your opinion from the last question.	Please rate your experiences with accessibility within the parks around Bozeman?	Please provide a reason or two and examples for your opinion from the last question.	Please rate your experience with the inclusivity of the classes, programs, and events offered through Parks and Recreation of Bozeman?
High quality	handcycling the need for wider and paved trails Bozeman is small so it's easy to get around. I'm not sure all parks have handicap parking or wheelchair accessible areas though.	High quality	The dinosaur park near the fire station has good paths. Lindley park also has paths, both are a bit bumpy rough for access.	Very high quality
Very low quality	I live more than 1 mile from the nearest bus stop and I don't drive (I am blind), meaning I have to get rides with other people to go to the parks. If I try to walk, there are too many roads without sidewalks or broken sidewalks or traffic lights that don't make a alert sound when it is safe to go across.	Low quality	There is no way for a blind person to know where the bathrooms, trail heads, or other features in the parks are located without actually stumbling into them. Updating the online descriptions of each park would be a good start.	Very low quality
Low quality	Many times it is 2 fold: knowing where the parks are and ability to get to the parks (Transportation).	High quality	I enjoy the bike paths and layout options for parks like Storymill. It has a lot for folks to offer and layed out well.	High quality
Very high quality		Very low quality	inaccessibility for wheelchair-using daughter (mulch & grass are hard to push through, no adaptive equipment)	Low quality

Please provide a reason or two and examples for your opinion from the last question.	What is your level of satisfaction around options for active transportation (cycling, walking, using a mobility assist device) within the City of Bozeman?	Please provide a reason or two and examples for your opinion from the last question.	Please share any other issues or concerns that you have around access or inclusivity to the City of Bozeman's Parks & Recreation services.
Bozeman is warm and welcoming	Satisfied	Bozeman is very bike friendly. I've seen the number of bikes increase over the years.	the need for longer trails to be able to not be on the road More cross walks and accessibility for the blind.
I don't have transportation, so I really can't test the inclusivity. I would love to have my son in more programs, but I can't get him there. I also can't get him to the free lunches during the summer.	Satisfied	Within the city does offer more transportation options, as well as more sidewalk from one place to another.	The number and quality of the parks in this area is amazing, and I hope to be able to take more advantage of them one day.
I have in the past tried scheduling things for the organization I belong to and struggled with knowing the parks layouts, available of times, and a person to talk to to get information on a timely manor.	Satisfied	I am blind, so this question really doesn't apply other than it would be awesome to have more tandem bikes available and folks to help guide. The challenge will be for me accessible controlled intersection to ensure safety is possible.	Please make tactile maps of parks and recreational areas and offer braille and audible signs to describe the narative on signs.

Dissatisfied

Please share any suggestions that you have to help improve access and inclusivity to the City of Bozeman's Parks & Recreation services.

trail that people living out side of the city like 4corners could ride a cycle to bozeman

Please update your website descriptions to give more information about the parks in a written format. Maps are great for people who can see, but not for persons with visual disabilities. I don't think there really is much you can do about broken sidewalks in the city or the lack of reliable public transportation. Even the traffic lights that don't have auditory indication for blind pedestrians is out of your Control.

If there is a sign with info, you can offer a bar code to scan so the device will link to web pages or audio files to be able to read it. also, partnering with organizations like Montana Independent Living Project, Montana Association for the Blind, School for the deaf/blind, VR agencies and senior focused houseing to get more folks active and out into the community.

Please rate your experience when it comes to access around getting to and from parks in Bozeman?

Please provide a reason and/or examples for your opinion from the last question.

Please rate your experiences with accessibility within the parks around Bozeman?

Please provide a reason or two and examples for your opinion from the last question.

Please rate your experience with the inclusivity of the classes, programs, and events offered through Parks and Recreation of Bozeman?

Low quality

Ground cover is insufficient for wheelchairs and gait trainers

Low quality

Ground cover is insufficient for wheelchairs and gait trainers

Low quality

High quality

Some parks, such as Story Mill, are extremely accessible. Others, like Kirk park are less accessible.

High quality

High quality

High quality

The parks are very nice.

Very low quality

Clean safe

High quality

We live on the southeast side of town, and appreciate the trail access to parks, library, downtown.

High quality

High quality

High quality

High quality

Low quality

As a wheelchair I have to depend on galavan, my partner, or others as I can't take a class to learn how to drive and there are not sidewalks that are consistent or trails that are paved.

Low quality

Story Mill is the only park I can easily enjoy with my family but I still can't get close to the play structures or swings to play with my kids.

Low quality

Please provide a reason or two and examples for your opinion from the last question.	What is your level of satisfaction around options for active transportation (cycling, walking, using a mobility assist device) within the City of Bozeman?	Please provide a reason or two and examples for your opinion from the last question.	Please share any other issues or concerns that you have around access or inclusivity to the City of Bozeman's Parks & Recreation services.
We don't feel barriers for participation of ALL users are considered. Bozeman, along with Montana in general, is dated with it's implementation of universal design.	Satisfied	Although they exist in most main areas, sidewalks and curb cuts should be present everywhere events take place. This is the same for access to events that are not on ground level. Are there ramps available? I would like this to be considered in our planning for the next 10 years.	Our parks do not have accessible ground cover or accessible play equipment. It is disappointing to try to recreate and not be included. An accessible swing, at the very least, should be included in all parks. Wood chips and pea gravel are not accessible ground coverings. This lack of access to things others take for granted negatively impacts quality of life. If a piece of equipment or space works for a disabled person, it will work for everyone. Taking this view could positively change our community.
I have not accessed any specific classes, programs, or events. But there is not an n/a option available.	Satisfied		
	Dissatisfied	My daughter has an electric trike. The trails are marked no motorized vehicles. It isn't safe for her to ride the bike lanes that are incorporated into roadways	My daughter has autism and I have mobility issues. I'm very worried that bozeman will enforce no electric bikes on the trails. We cannot ride the bike lanes due to safety issues. How is it that my tax dollars mean we should be excluded from trail use because our bikes are electric?
My daughter has had great experiences at summer camps, and the library offers good opportunities too.	Dissatisfied	I wish there was a trail that allowed people to get to Eagle Mount without having to walk/bike on busy Goldenstein! This is especially important for people with special needs, because their judgement isn't as good as typical folks. I want my daughter to be as independent as possible, but for her to get to Eagle Mount on her own is a bit disconcerting. Maybe a trail from Sacajawea to Eagle Mount?	
	Satisfied		
To the best of my knowledge there are not any disability specific classes or programs so I cannot speak to the inclusivity.	Very dissatisfied	Sidewalks don't exist, bus stops are not on sidewalks or reachable, galavan has very specific hours	There are not enough options for wheelchair friendly family activities or trails that are paved that can be easily used

Please share any suggestions that you have to help improve access and inclusivity to the City of Bozeman's Parks & Recreation services.

Please include disabled children and adults. Implement universal design and ADA compliant spaces. Disabled people deserve to live lives where they are included.

Post "bikes welcome here" signs on trails

Sidewalks everywhere, paved trails, parks are wheelchair accessible

Please rate your experience when it comes to access around getting to and from parks in Bozeman?

Please provide a reason and/or examples for your opinion from the last question.

Please rate your experiences with accessibility within the parks around Bozeman?

Please provide a reason or two and examples for your opinion from the last question.

Please rate your experience with the inclusivity of the classes, programs, and events offered through Parks and Recreation of Bozeman?

Very high quality

Low quality

I go to the parks in Bozeman parks with friends or on near where I live.

I feel that at least Cooper park is close to where I live

Low quality

Low quality

I said low qualities because even though I can go to the park. Some of my friends that need accessibility aren't able to go and I feel like there should be more accessible parks everywhere are least. There would be more inclusive if there was more parks like that.

I believe that there should be acessibilty depending on which parks need it

Very high quality

Low quality

High quality

High quality

Low quality

Very high quality

Very low quality

Public transportation lacking. Sidewalks blocked, not shoveled.

Remember

Very high quality

Low quality

Trails not kept up- big holes, loose dogs

Thank

Very high quality

Low quality

3

8

9

2

1

10

7

2

3

7

7

1

Please provide a reason or two and examples for your opinion from the last question.

What is your level of satisfaction around options for active transportation (cycling, walking, using a mobility assist device) within the City of Bozeman?

Please provide a reason or two and examples for your opinion from the last question.

Please share any other issues or concerns that you have around access or inclusivity to the City of Bozeman's Parks & Recreation services.

I feel like there are lots of options for accessible programs like Eagle mount and special Olympics but like if I wanted to take gymnastics I wouldn't be able to so I wish there were more things for young adults that we could try either gymnastics or dance or more that are more for both disabilities and without disabilities

Satisfied

Satisfied

I feel like Bozeman has been ok on this.

N/A

I have never... in 25 years?... seen any classes, programs or events specifically welcoming anyone with disabilities? Either there have been none.... or you are not reaching out the right way? We have adopted 4 children with various challenges over the last 30 years... and have lived in Bozeman 29.5 years.

Dissatisfied

Bicycling seems dangerous going into town, at best. And we live out of town.

Don't have a way to get to classes or programs

We

Very dissatisfied
Very dissatisfied

Sidewalks and trails not kept up.

I

Loose dogs are a huge problem. Lack of trail maintenance makes walking unsafe.

We

11 8 3

Please share any suggestions that you have to help improve access and inclusivity to the City of Bozeman's Parks & Recreation services.

I think an indoor sensory gym would be so amazing. I have sensory needs my self and I think it would benefit so many others for all ages

Patrol parks to keep loose dogs from keeping others from using the parks, check trails in parks and repair them more often, provide more public transportation for people with disabilities- Galavan is woefully underfunded and unavailable.

Thank everyone

Which race/ethnicity best describes you? (Please choose only one.)	Please rate your experience visiting parks, trails, and recreation facilities in Bozeman?	Please provide a reason and/or examples for your opinion from the last question.	How safe and welcome do you feel visiting parks, trails, and recreation facilities and outdoor spaces in Bozeman?	Please provide a reason or two and examples for your opinion from the last question.	What are the biggest barriers to you or anyone in your household when visiting parks, trails, or facilities in Bozeman?	In your ideal world, what would make your parks and public spaces safer and more welcoming?	that you would like to talk about regarding parks, recreation, and active transportation in the Bozeman area?	are looking for people who would be willing to share more about your personal experiences in Bozeman. Please let us		
--	---	--	---	--	---	---	---	---	--	--

High quality

They are clean, even the bathrooms.

Safe

Because it's Bozeman!

Having more events that are in these spaces to not only introduce people to the space but also encourage a community to meet together. It would be really nice if there was an event just for women or just for bipoc populations.

No, thank you!

April 22 Engage Bozeman Workshop

Ideas		Votes	Visitors	Sign Up form Details					
Title	Description			Usertype	Which quadrant do you live in?	What year were you born?	With which racial or ethnic group(s) do you identify?	Do you have a disability?	With which gender do you identify?
Parks connector trails that allow enjoyable bike/walking transit throughout Bozeman	I would like to see the city plan for a connecting network of trails that allow bike and ped access throughout the city, even to Belgrade and Bridger Bowl, etc. Two comparable cities that have implemented this type of trail system are Jackson, WY and Boise, ID. A much larger city with this system is the Atlanta Greenbelt. This type of investment can actually attract businesses, as a surprising number of folks don't want to drive cars and love taking the "greenbelt" or parks connector. A big investment in parks and connecting trails would make the city much more vibrant and liveable.	1	7	User	Southeast (SE)	1984	White	No	Male
Disconnected		0	0	User	I do not live in Bozeman	1993	White	No	Female
East-west connections (challenging) slowly getting there!		1	0	User	I do not live in Bozeman	1993	White	No	Female
Better Communication w/ Partnerships		0	1	User	I do not live in Bozeman	1993	White	No	Female
Diversity of Parks	Can get to different kind of park within 10 min walk	0	2	User	I do not live in Bozeman	1993	White	No	Female
Such great potential!	Needs a plan to realize it...	0	0	User	I do not live in Bozeman				
good not great		1	0	User					
new parks lack identity		0	0	User	I do not live in Bozeman				
time money funding - challenges		0	0	User					
Excellent for children!	Great facilities, playgrounds	0	0	User	I do not live in Bozeman				
Lots of growth		0	0	User	I do not live in Bozeman				
More walking trails	(Some are good today... support expanding!)	0	0	User	I do not live in Bozeman				
needs an aquatics center		0	0	User	I do not live in Bozeman				
Active and well-used	Well-appreciated	0	2	User	I do not live in Bozeman				
more pickle ball and tennis courts		0	0	User	I do not live in Bozeman				
have good parks, hard to find them! Not all connected		0	1	User					
ticketed for dog park use - think about policies for dogs/park use		0	0	User					

Ideas		Votes	Visitors	Sign Up form Details					
Title	Description			Usertype	Which quadrant do you live in?	What year were you born?	With which racial or ethnic group(s) do you identify?	Do you have a disability?	With which gender do you identify?
need more restrooms - winter is when many are outside!		0	1	User					
Starting to see a difference	Benefits of parks and trails district	0	0	User	I do not live in Bozeman				
Indoor recreational facility		0	1	User	I do not live in Bozeman				
Too many barriers to basic infrastructure in parks		0	0	User					
bike racks! need more		0	0	User					
one incomplete curb cut creates barriers to access for persons with disabilities		0	1	User					
more developed trails between parks		0	1	User	I do not live in Bozeman				
quality over quantity	most active park is passive - Peets Hill...do not need to overprogram	0	0	User					
would love to ride from Bozeman to Belgrade and Four Corners without traveling along a high traffic route		1	3	User	I do not live in Bozeman				
fragmented		0	0	User			White	No	
Fractured yet attractive		0	0	User	Southeast (SE)	1960	White	No	Female
access to viewsheds!		0	0	User			White	No	
fractured		0	0	User			White	No	
overused and degraded		0	0	User			White	No	
potentially dangerous to wildlife		0	0	User			White	No	
impractical for biking!		0	0	User			White	No	
Improve baseball/softball fields		0	0	User					
More softball support	One of the fastest growing sports for women yet we lack adequate support to foster meaningful growth for the young women in the community. We need an indoor facility for ALL sports due to our long winters. But updated fields and support for youth is needed drastically.	0	0	User					
Improve softball/baseball fields!		0	0	User					
East west connectivity		0	0	User					
Beautiful, varying types & unclear on trail connection		0	0	User	Southeast (SE)	1979	White	No	Female
Eastside, connected, dogs		0	0	User	Southwest (SW)	1987	White	No	Female
Amplification of Bozeman natural characteristics		0	0	User					

Ideas		Votes	Visitors	Sign Up form Details					
Title	Description			Usertype	Which quadrant do you live in?	What year were you born?	With which racial or ethnic group(s) do you identify?	Do you have a disability?	With which gender do you identify?
Lacking diversity, more activities for older kids, indoor aquatic center, tennis, other activities beyond playgrounds.		0	0	User					
Fractured, inequitable, viewsheds if it wasn't for Private citizens paying for parks w/ private Funds, Bozeman would just be many Police cars circling expensive neighborhoods	Parks are currently inequitable for children and different use groups across town - older parks lack attention, maintenance and diversity	0	3	User	Northeast (NE)	1990	White	No	Female
	outdoor sports matter	0	1	User					
disconnected missing middle Need expansion/connectivity	When you look at the map you can see the parks on the perimeters but not much connection happening through the middle of town. East west is tough. Getting kids safely to CJMS from east of north 7th is tough. We need some sort of crossing over or under at least one of the RR crossings- if not for cars then for bikes and pedestrians	0	0	User	Northeast (NE)	1961	White	No	Female
		0	0	User	Northeast (NE)	1953	White	No	Male
Parks with fishing ponds	In the ponds cutthroat, brooks, browns, crappie, musky, smallmouth and largemouth bass, bluegill, grayling, whitefish, catfish, cutbows, and perch.	0	0	User	Southwest (SW)	2003	White	No	Male
Comment response to "Active and well-used"	Aligns with values, part of the local lifestyle	0	0	User	I do not live in Bozeman				
Comment response to "need more restrooms - winter is when many are outside!"	Peet's Hill works well!	0	0	User					

Dec 3, 2021 to Nov 29, 2022

Ideas		Votes	Visitors
Title	Description		
Trail/Beltway/Loop around the city		0	0
Better pedestrian crossings	Over the street pedestrian bridges over major street corridors	0	0
Protected bike lanes	Especially on busier streets, buffered protected bike lanes	0	0
Refridgerated outdoor ice	would give us solid 4-5 months of outdoor skating time, used to have almost 6 months previously	0	0
Expansion of community nordic trails	Support from the city for these, Lindley as an example	0	0
Interconnected park system	So people can take advantage of all the amenities and facilities without relying on use of the car. Whole system is connected and provides what people need.	0	0
completed and maintained	master plans (complete); stuff we do have we do not take care of	0	0
Need an outdoor swimming pool!	A place where people learn to swim (splash parks don't do that). Single pool can't address needs of the whole community. Outdoor pools very linked into summer fun! Kids should be able to bike to a pool.	0	1
5-10 minute walk of a trail, that can connect into the trail system		0	0
Continued maintenance improvements	Keep up the trajectory on improvement!	0	0
Worry - Time wasted and dreams built - but nothing come out of it	sometimes no follow through!	0	0
Inclusive to all	Ensure the system is inclusive... all times of day... not just 8-5pm... all ages.	0	1

Hire people to do this work - do not rely on partners when the City should be doing the work!	City has a chance to take on more responsibility! Community cares about parks, rec, and trails	0	3
eight to eighty park system - multi-generational/built for all ages		0	1
Embrace community partners	Sports people, GVLT, ski groups, Run Dog Run. Listen to community input. Very tied into community.	0	0
vision leadership and results		0	0
more off leash areas, or shift in rules/policy		0	1
pedestrian bridges, connected system - over arterials and collectors		0	0
public plazas/spaces in dense places - require new developments to create public space		0	0
Embrace natural spaces	Unprogrammed parks, take advantage of the maintenance district to protect natural resources, manage against heavy use. Think about restoration, people management, weed control. See some glimmers of hope with the district!	0	0
taking care of streams/creeks through the city	environmental impact should be an important tenet	0	0
more pathways and greenways - not close to roadways...nice to have a buffer/more enjoyable. Get ahead of future growth!		0	0
Protect existing parks		0	0
trails along waterways		0	0
connected and safe		0	0
safe and connected		0	0
variety of trails		0	0

routes and wayfinding		0	0
safe for wildlife		0	0
connected, conservation		0	0
appealing to teenagers	group that parks are not catering to today	0	1
inviting		0	0
opportunity for BZN history and natural spaces and education		0	1
more public art		0	0
places for musical performances in parks	maybe a sheltered area/band shell for small performances - like Rose Park..little venue with a neighborhood focus! could be multi-use	0	2
diversity equity inclusion		0	0
Baseball/Softball field improvements NOW!	Baseball and softball field improvements are desperately needed. Soccer/Lacrosse have ample field space and a professional turf. Our baseball/softball fields are the laughing stock of the state.	1	0
Wild Life Sanctuary		0	0
Native Plants and wildflower preserves	impossible to maintain with uncontrolled dog use	0	0
separate bike paths	make the streets safe for pedestrians, cyclists and pets by slowing traffic and sharing the urban streets better	0	0
Make traffic calming standard	let's face it, we all drive too fast through crosswalks, traffic lights etc. Put in traffic calming at crosswalks.	0	0
Playful, community oriented and interconnected		0	0
Weatside, bike trails, neighborhoods		0	0
inclusive play equipment for children with disabilities		0	1

Comment response to "Trail/Beltway/Loop around the city"	Pedestrian/bikeable loop	0	0
Comment response to "Better pedestrian crossings"	Some concerns about trails and bikes connected to the schools. Need to consider location of elementary schools in design of new facilities.	0	0
Comment response to "Expansion of community nordic trails"	Expanding into parts of town where there aren't trails, nordic trails don't exist in valley west, typically just in downtown	0	0
Comment response to "Embrace community partners"	Plan can show partners where they are uniquely positioned to contribute by understanding what the City's plan is.	0	0
Comment response to "Embrace natural spaces"	Hire a natural resources specialist.	0	0

PUBLIC WORKSHOP: Park System Patterns

PUBLIC WORKSHOP: Park System Patterns				
Marker Details				
Latitude	Longitude	Address	Category	Your Comment
		511 East Tamarack Street, Bozeman, Montana 59715, United States		
45.690565	-111.02989	http://engage.bozeman.net/pratplan/maps/public-workshop-park-system-patterns?reporting=true#marker-60320 432 South Church Avenue, Bozeman, Montana 59715, United States	Opportunities	More connections to Bozeman Creek and room for it to ebb and flow
45.674388	-111.02845	http://engage.bozeman.net/pratplan/maps/public-workshop-park-system-patterns?reporting=true#marker-60322 210 North 24th Avenue, Bozeman, Montana 59718, United States	Places	Anne's favorite place! First step in the trails system. Also Cathy's where she walks everyday.
45.681779	-111.06869	http://engage.bozeman.net/pratplan/maps/public-workshop-park-system-patterns?reporting=true#marker-60323 2864 McIlhattan Road, Bozeman, Montana 59715, United States	Barriers / Difficulties	Need to add more wayfinding in the system
45.720683	-111.03307	http://engage.bozeman.net/pratplan/maps/public-workshop-park-system-patterns?reporting=true#marker-60324 2000 North 19th Avenue, Bozeman, Montana 59718, United States	Barriers / Difficulties	Parking challenges, would be great to subdivide it, but there are chances to expand it since it gets busy!
45.700035	-111.06487	http://engage.bozeman.net/pratplan/maps/public-workshop-park-system-patterns?reporting=true#marker-60326 Golf Way, Bozeman, Montana 59715, United States	Barriers / Difficulties	Northern part of 19th!
45.672094	-111.02298	http://engage.bozeman.net/pratplan/maps/public-workshop-park-system-patterns?reporting=true#marker-60327 935 Highland Boulevard, Bozeman, Montana 59715, United States	Opportunities	use city resources, such as public restrooms, for winter skiing trails. promote non profits, such as BSF, that create recreational opportunities
45.666321	-111.01781	http://engage.bozeman.net/pratplan/maps/public-workshop-park-system-patterns?reporting=true#marker-60328 322 North Black Avenue, Bozeman, Montana 59715, United States	Places	Highland Glen - skiing, biking, hiking
45.68328	-111.03536	http://engage.bozeman.net/pratplan/maps/public-workshop-park-system-patterns?reporting=true#marker-60330 1890 West Kagy Boulevard, Bozeman, Montana 59715, United States	Places	So many things to do - meetings, ice skating, walk your dog. Iconic park for the north side.
45.660007	-111.06251	http://engage.bozeman.net/pratplan/maps/public-workshop-park-system-patterns?reporting=true#marker-60331 702 Bridger Drive, Bozeman, Montana 59715, United States	Barriers / Difficulties	Giant intersection at Kagy/19th, would be great to ride your bike up and over that intersection
45.701084	-111.02466	http://engage.bozeman.net/pratplan/maps/public-workshop-park-system-patterns?reporting=true#marker-60334 110 North 19th Avenue, Bozeman, Montana 59718, United States	Barriers / Difficulties	Access for non-profit childcare
45.67956	-111.06242	http://engage.bozeman.net/pratplan/maps/public-workshop-park-system-patterns?reporting=true#marker-60335 2710 McIlhattan Road, Bozeman, Montana 59715, United States	Barriers / Difficulties	Gnarly intersection for bike riding!
45.716068	-111.02989	http://engage.bozeman.net/pratplan/maps/public-workshop-park-system-patterns?reporting=true#marker-60336 Kirk Park, N. 20th Ave., Bozeman, Montana 59718, United States	Opportunities	The landfill is a great area to create a mountain bike park, expand the adjacent off-leash dog park, and create off-leash dog trails.
45.681224	-111.06591	http://engage.bozeman.net/pratplan/maps/public-workshop-park-system-patterns?reporting=true#marker-60337 1413 Maple Drive, Bozeman, Montana 59715, United States	Places	Kirk park should remain a park - worries about its future!
45.665466	-111.0162	http://engage.bozeman.net/pratplan/maps/public-workshop-park-system-patterns?reporting=true#marker-60338 Interstate 90, Bozeman, Montana 59715, United States	Opportunities	Bridger Ski - partner
45.683458	-111.01446	http://engage.bozeman.net/pratplan/maps/public-workshop-park-system-patterns?reporting=true#marker-60339 1921 West Main Street, Bozeman, Montana 59718, United States	Opportunities	opportunity for crossing over I-90, create a loop
45.679358	-111.0636	http://engage.bozeman.net/pratplan/maps/public-workshop-park-system-patterns?reporting=true#marker-60340 300 Highland Boulevard, Bozeman, Montana 59715, United States	Opportunities	On high speed roads, need to go beyond bike lanes to more shared use path facilities
45.674313	-111.01768	http://engage.bozeman.net/pratplan/maps/public-workshop-park-system-patterns?reporting=true#marker-60341 182 Sq Ft Inside City, Bozeman, Montana 59715, United States	Barriers / Difficulties	Are the public restrooms open during the winter?
45.660697	-111.02742	http://engage.bozeman.net/pratplan/maps/public-workshop-park-system-patterns?reporting=true#marker-60342 8552 Huffine Lane, Bozeman, Montana 59718, United States	Opportunities	GVLT - worked with City to purchase to add to Peets Hill
45.670954	-111.1119	http://engage.bozeman.net/pratplan/maps/public-workshop-park-system-patterns?reporting=true#marker-60343 1385 Ruth Thibault Way, Bozeman, Montana 59715, United States	Opportunities	opportunity for crossing over Huffine north to south here, for new developments
45.681464	-111.05541	http://engage.bozeman.net/pratplan/maps/public-workshop-park-system-patterns?reporting=true#marker-60344 1173 Furguson Avenue, Bozeman, Montana 59718, United States	Opportunities	Need a PLAN for connecting bikes into neighborhoods, to schools, connecting to key destinations. Include a wayfinding system
45.696214	-111.09199	http://engage.bozeman.net/pratplan/maps/public-workshop-park-system-patterns?reporting=true#marker-60345	Places	I go here a lot but very crowded and over used! We need more

45.697368	-111.0904	1987 Vaquero Parkway, Bozeman, Montana 59718, United States http://engage.bozeman.net/pratplan/maps/public-workshop-park-system-patterns?reporting=true#marker-60346	Opportunities	love the off leash dog park, BUT, it is too crowded. We need more off leash dog parks, especially on the west side.
45.661035	-111.02757	182 Sq Ft Inside City, Bozeman, Montana 59715, United States http://engage.bozeman.net/pratplan/maps/public-workshop-park-system-patterns?reporting=true#marker-60347 923 Highland Boulevard, Bozeman, Montana 59715, United States	Opportunities	GVLT can help with seeking donorships and partnerships to help cities gain access to funding they couldnt get otherwise. Also the sports foundation. Shout out to Ultimate Frisbee at Kirk Park
45.667026	-111.01592	http://engage.bozeman.net/pratplan/maps/public-workshop-park-system-patterns?reporting=true#marker-60348 2864 Mcilhattan Road, Bozeman, Montana 59715, United States	Places	We use HG trails a ton in the summer for the youth mtn bike team. There's definitely an opportunity here to add more trails! We'd love to help with this.
45.721102	-111.03358	http://engage.bozeman.net/pratplan/maps/public-workshop-park-system-patterns?reporting=true#marker-60349 Kirk Park, N. 20th Ave., Bozeman, Montana 59718, United States	Places	Great doggo park
45.681606	-111.06503	http://engage.bozeman.net/pratplan/maps/public-workshop-park-system-patterns?reporting=true#marker-60350 3701 Stony Brook Lane, Bozeman, Montana 59715, United States	Places	Real multi-use park - Kirk! Many sml groups using it which is nice, like ultimate frisbee! Hopes it stays green!
45.644453	-111.02901	http://engage.bozeman.net/pratplan/maps/public-workshop-park-system-patterns?reporting=true#marker-60351 27737 Frontage Road, Bozeman, Montana 59715, United States	Places	Can be hard to find this trail if you don't know it's there.
45.711873	-111.04908	http://engage.bozeman.net/pratplan/maps/public-workshop-park-system-patterns?reporting=true#marker-60353 709 West Koch Street, Bozeman, Montana 59715, United States	Places	Some of the best birding in Bozeman
45.674942	-111.04705	http://engage.bozeman.net/pratplan/maps/public-workshop-park-system-patterns?reporting=true#marker-60354 74 Hanley Avenue, Bozeman, Montana 59718, United States	Places	Park we go to often!
45.679755	-111.09811	http://engage.bozeman.net/pratplan/maps/public-workshop-park-system-patterns?reporting=true#marker-60355 5667 Staffanson Road, Bozeman, Montana 59718, United States	Places	We love the west side neighborhood parks, but would love to see more connection of the parks!
45.660757	-111.10744	http://engage.bozeman.net/pratplan/maps/public-workshop-park-system-patterns?reporting=true#marker-60356 1173 Furguson Avenue, Bozeman, Montana 59718, United States	Opportunities	Harvest Creek and Babcock Meadows - chance to improve connectivity. Way to make prk to park movement happen safely!
45.697218	-111.0919	http://engage.bozeman.net/pratplan/maps/public-workshop-park-system-patterns?reporting=true#marker-60357 213 Clifden Drive, Bozeman, Montana 59718, United States	Barriers / Difficulties	great amenity, but overused
45.681344	-111.09918	http://engage.bozeman.net/pratplan/maps/public-workshop-park-system-patterns?reporting=true#marker-60358 4901 Huffine Lane, Bozeman, Montana 59718, United States	Barriers / Difficulties	Would love to have public restrooms
45.673713	-111.10748	http://engage.bozeman.net/pratplan/maps/public-workshop-park-system-patterns?reporting=true#marker-60359 Golf Way, Bozeman, Montana 59715, United States	Opportunities	Babcock Creek comment should go here!
45.673158	-111.02107	http://engage.bozeman.net/pratplan/maps/public-workshop-park-system-patterns?reporting=true#marker-60360 980 Story Mill Road, Bozeman, Montana 59715, United States	Places	ski trails at sunset hills! Opportunity for Hollaran/Canyon Gate to provide sizable pocket parks in addition to the connector between Legends park and the light at Bridger Drive
45.704174	-111.02007	http://engage.bozeman.net/pratplan/maps/public-workshop-park-system-patterns?reporting=true#marker-60361 Bogert Park, 232 S Church Ave, Bozeman, Montana 59715, United States	Opportunities	Given climate change, the City needs to purchase an ice rink refrigeration system to greatly improve and lengthen the outdoor skating season at the Bogert covered ice rink.
45.676247	-111.03154	http://engage.bozeman.net/pratplan/maps/public-workshop-park-system-patterns?reporting=true#marker-60362 259 Greenmore Court, Bozeman, Montana 59715, United States	Opportunities	
45.645653	-111.03206	http://engage.bozeman.net/pratplan/maps/public-workshop-park-system-patterns?reporting=true#marker-60479 3567 Sourdough Road, Bozeman, Montana 59715, United States	Places	Sourdough Trail
45.645387	-111.02686	http://engage.bozeman.net/pratplan/maps/public-workshop-park-system-patterns?reporting=true#marker-60480 Interstate 90, Bozeman, Montana 59715, United States	Places	Make it an attractive place for folks to want to come here and enjoy this space - great example of subdivision relationships.
45.680834	-111.01047	http://engage.bozeman.net/pratplan/maps/public-workshop-park-system-patterns?reporting=true#marker-60481 Village Downtown Boulevard, Bozeman, Montana 59715, United States	Places	Path to the M! Matt GVLT
45.682244	-111.01805	http://engage.bozeman.net/pratplan/maps/public-workshop-park-system-patterns?reporting=true#marker-60482 702 Bridger Drive, Bozeman, Montana 59715, United States	Places	Path to the M and Story Mill - could not have happened without the trails and parks fund - did not come from the general fund. Playgrounds, creeks, connectivity and path to the M
45.701466	-111.02549	http://engage.bozeman.net/pratplan/maps/public-workshop-park-system-patterns?reporting=true#marker-60483	Places	trails, open space and parks fund as key for projects like this

45.695	-111.09143	Ferguson Avenue, Bozeman, Montana 59718, United States http://engage.bozeman.net/pratplan/maps/public-workshop-park-system-patterns?reporting=true#marker-60484 5324 Westmorland Drive, Bozeman, Montana 59718, United States	Places	Lots of bird habitat, wetlands, parks and natural resources. Development review process - great work over the years to create a great network of parks with trails and green space. Preserving some of those wetlands, when it was not desired.
45.683638	-111.11139	http://engage.bozeman.net/pratplan/maps/public-workshop-park-system-patterns?reporting=true#marker-60485 Valley West Park, Bozeman, Montana 59718, United States	Places	Bronken park wetlands, soccer fields
45.680864	-111.09856	http://engage.bozeman.net/pratplan/maps/public-workshop-park-system-patterns?reporting=true#marker-60486 1209 East Main Street, Bozeman, Montana 59715, United States	Places	value of linear parks, access to water, wetlands and nature
45.68052	-111.01882	http://engage.bozeman.net/pratplan/maps/public-workshop-park-system-patterns?reporting=true#marker-60487 700 Dell Place, Bozeman, Montana 59715, United States	Places	Fabulous wetlands
45.671074	-111.03283	http://engage.bozeman.net/pratplan/maps/public-workshop-park-system-patterns?reporting=true#marker-60488	Places	Beautiful corridor that works for commuting as well as pleasure Beautiful ponds, birds and wildlife, sanctuary that people use as a dog park
45.651503	-111.07	360 Enterprise Boulevard, Bozeman, Montana 59718, United States http://engage.bozeman.net/pratplan/maps/public-workshop-park-system-patterns?reporting=true#marker-60489 1601 East Baxter Lane, Bozeman, Montana 59715, United States	Places	Important to preserve this space as a wetland and habitat, and not as a dog park, protect the wildlife that are here Would be nice to post signage in this area to create awareness
45.699466	-111.05689	http://engage.bozeman.net/pratplan/maps/public-workshop-park-system-patterns?reporting=true#marker-60491 27809 Frontage Road, Bozeman, Montana 59715, United States	Opportunities	Growth is encroaching on this little wetland area. No access.
45.711394	-111.0474	http://engage.bozeman.net/pratplan/maps/public-workshop-park-system-patterns?reporting=true#marker-60492 2777 North 7th Avenue, Bozeman, Montana 59715, United States	Barriers / Difficulties	Trails/wetland areas - could meet parkland requirement, wouldn't have to move them out of town, would go a long ways to contribute to overall connectivity
45.704081	-111.04882	http://engage.bozeman.net/pratplan/maps/public-workshop-park-system-patterns?reporting=true#marker-60493 1034 Boylan Road, Bozeman, Montana 59715, United States	Barriers / Difficulties	management challenges with folks with dogs - especially in places that are natural resources.
45.706314	-111.02955	http://engage.bozeman.net/pratplan/maps/public-workshop-park-system-patterns?reporting=true#marker-60494 408 South 13th Avenue, Bozeman, Montana 59715, United States	Barriers / Difficulties	Would love to see offroad bike/road connectivity Getting from downtown out to NW trails, difficult to get to
45.675122	-111.05435	http://engage.bozeman.net/pratplan/maps/public-workshop-park-system-patterns?reporting=true#marker-60495	Barriers / Difficulties	Rose Park, Regional Park Off leash zone at Peets Hill - seen such an increase in the last few years of new residents and people getting out more and adopting dogs. Some places in parks that are overwhelmed by dogs and/or people. Was not designed for this amount of use.
45.663562	-111.02736	http://engage.bozeman.net/pratplan/maps/public-workshop-park-system-patterns?reporting=true#marker-60496 83 Limestone Meadows Lane, Bozeman, Montana 59715, United States	Barriers / Difficulties	Is the connection between triple tree and painted hills city? Some great progress has been made in connectivity.
45.613137	-111.00105	http://engage.bozeman.net/pratplan/maps/public-workshop-park-system-patterns?reporting=true#marker-60497 1421 Kenyon Drive, Bozeman, Montana 59715, United States	Opportunities	CITYWIDE - Mountain bikes took off, now have e-bikes and one wheels. Build the perfect park. It is all about who ends up using it.
45.664566	-111.02726	http://engage.bozeman.net/pratplan/maps/public-workshop-park-system-patterns?reporting=true#marker-60498	Barriers / Difficulties	Parks reaching capacity - showing natural resource damage Parks not designed for this amount of use that we're seeing recently E-bikes, motorized scooters, mountain bikes
45.695269	-111.08766	1845 Vaquero Parkway, Bozeman, Montana 59718, United States http://engage.bozeman.net/pratplan/maps/public-workshop-park-system-patterns?reporting=true#marker-60499 244 Greenmore Court, Bozeman, Montana 59715, United States	Barriers / Difficulties	Anderson dog park- well loved and starting to show a lot of wear and overuse Peets Hill as well -
45.644288	-111.03182	http://engage.bozeman.net/pratplan/maps/public-workshop-park-system-patterns?reporting=true#marker-60500 712 East Main Street, Bozeman, Montana 59715, United States	Barriers / Difficulties	Traffic calming on the trail! People racing, high speeds is a challenge
45.67941	-111.02575	http://engage.bozeman.net/pratplan/maps/public-workshop-park-system-patterns?reporting=true#marker-60502 432 South Church Avenue, Bozeman, Montana 59715, United States	Opportunities	Connect this nexus to the depot park, northside trails
45.674256	-111.02853	http://engage.bozeman.net/pratplan/maps/public-workshop-park-system-patterns?reporting=true#marker-60503	Places	Peets Hill

				Parks reaching capacity - showing natural resource damage
45.674556	-111.02839	406 South Church Avenue, Bozeman, Montana 59715, United States http://engage.bozeman.net/pratplan/maps/public-workshop-park-system-patterns?reporting=true#marker-60505	Barriers / Difficulties	Parks not designed for this amount of use that we're seeing recently
45.670939	-111.08343	2999 Fowler Avenue, Bozeman, Montana 59718, United States http://engage.bozeman.net/pratplan/maps/public-workshop-park-system-patterns?reporting=true#marker-60507	Barriers / Difficulties	E-bikes, motorized scooters, mountain bikes create safe way to get to the west side
45.689889	-111.09135	4040 Annie Street, Bozeman, Montana 59718, United States http://engage.bozeman.net/pratplan/maps/public-workshop-park-system-patterns?reporting=true#marker-61079	Opportunities	This side of Oak Springs Park is undeveloped and in need of investment. It currently serves as a defacto "dog park" due to it being just a large field with many dog waste stations. This park would provide an excellent opportunity for "yappy hours" or off-leash hours to support the way it is already being used. In addition, adding trees, benches, and other low cost amenities will increase the enjoyment for surrounding residents.
45.69591	-111.09216	1173 Furguson Avenue, Bozeman, Montana 59718, United States http://engage.bozeman.net/pratplan/maps/public-workshop-park-system-patterns?reporting=true#marker-61080	Barriers / Difficulties	This dog park is an amazing amenity but is over-utilized due to being the only dog park within a half mile of many many homes. Intense erosion in the spring and heavy use has led to it just being a mud/dirt pit with little grass. It needs investment and additional smaller dog parks or off-leash friendly hours parks nearby to lighten the load and allow the landscape to recover.
45.693074	-111.08953	3793 West Oak Street, Bozeman, Montana 59718, United States http://engage.bozeman.net/pratplan/maps/public-workshop-park-system-patterns?reporting=true#marker-61081	Places	The shared use path along the north side of Oak is amazing and should ring the whole park to provide safe connectivity to adjacent neighborhoods.
45.720503	-111.0344	2864 Mcilhattan Road, Bozeman, Montana 59715, United States http://engage.bozeman.net/pratplan/maps/public-workshop-park-system-patterns?reporting=true#marker-61082	Barriers / Difficulties	This park would greatly benefit from some shade in the summer. It's an amazing space, but also adding a pavilion or covered space would make it much more amazing!
45.696794	-111.01959	L Street, Bozeman, Montana 59715, United States http://engage.bozeman.net/pratplan/maps/public-workshop-park-system-patterns?reporting=true#marker-61083	Barriers / Difficulties	This dog area needs shade and is too small compared to the balance of the park area. I understand protecting wildlife, but there should be another opportunity for people to enjoy recreation with their dogs on this side of town.
45.674073	-111.02848	Peets Hill/Burke Park, 600 S. Church St., Bozeman, Montana 59715, United States http://engage.bozeman.net/pratplan/maps/public-workshop-park-system-patterns?reporting=true#marker-61695	Barriers / Difficulties	Peet's Hill suffers from overuse. Because it is the only dog park on this side of town, it is full of dog feces year round. The wild flowers that used to be famous in this area are dying out, only surviving on slopes where dogs don't run and pee. Bikes, loose dogs and people collide, and dog owners are often irresponsible and allow their dogs to run off leash into the property of the homes along Church and the library land and path. Each of these groups needs to be considered before the hill becomes an unwelcoming place. The smell of feces when the sun comes out is awful. I miss the wild flowers.
45.721042	-111.03307	2864 Mcilhattan Road, Bozeman, Montana 59715, United States http://engage.bozeman.net/pratplan/maps/public-workshop-park-system-patterns?reporting=true#marker-61697	Opportunities	This is what a dog park should be. It is big enough to minimize conflicts, open enough to see all around you, and people actually pick up their dogs' messes. Unlike Peet's Hill, which is becoming a traffic jam.
45.674897	-111.03107	418 Bogert Place, Bozeman, Montana 59715, United States http://engage.bozeman.net/pratplan/maps/public-workshop-park-system-patterns?reporting=true#marker-61746	Opportunities	I love this park, right off downtown, where the local daycares bring children nearly everyday to play on the playground, where pickup hockey happens all winter, where the city band plays, and where SLAM holds its events. Also soccer groups practice there, there is a fitness group of expectant and post partum mothers every summer, dog training classes take place, college students come and play bocci ball, baseball, frisbee, birthday parties and every kind of celebration occur . It is so well used, and so loved.
45.676037	-111.03067	302 South Church Avenue, Bozeman, Montana 59715, United States http://engage.bozeman.net/pratplan/maps/public-workshop-park-system-patterns?reporting=true#marker-61747	Opportunities	The outdoor pool is so wonderful to have. There are swimming lessons for young children, adult lap swimming, family swimming. The mural on the entrance wall to the pool is amazing. This pool is a community treasure.
45.676044	-111.02793	300 South Wallace Avenue, Bozeman, Montana 59715, United States http://engage.bozeman.net/pratplan/maps/public-workshop-park-system-patterns?reporting=true#marker-61748	Opportunities	The sculpture park is lovely to walk through, and the meditation labyrinth.

45.675718	-111.02785	309 South Wallace Avenue, Bozeman, Montana 59715, United States http://engage.bozeman.net/pratplan/maps/public-workshop-park-system-patterns?reporting=true#marker-61749	Barriers / Difficulties	Back along the watercourse that is shut off, transients often defecate in the stream bed. During the summer, the dogs go done there and roll in it. Also, some of the trees along the library walk could use trimming before they lose branches.
45.663262	-111.03397	210 East Mason Street, Bozeman, Montana 59715, United States http://engage.bozeman.net/pratplan/maps/public-workshop-park-system-patterns?reporting=true#marker-61750	Opportunities	This is a great little park with a new playground being installed that is just wonderful. It is used all summer for baseball, and the neighborhood families also watch the games and play at the playground.
45.67072	-111.03955	811 South Willson Avenue, Bozeman, Montana 59715, United States http://engage.bozeman.net/pratplan/maps/public-workshop-park-system-patterns?reporting=true#marker-61751	Opportunities	This little city park is also very busy. Volunteers maintain the flower gardens, and the Friends of the Story Mansion hold outdoor events for families and children, such as Halloween at the Mansion, St. Patrick's Day, Christmas, Teas, and I have really enjoyed going to these events.
45.677569	-111.04172	111 South Grand Avenue, Bozeman, Montana 59715, United States http://engage.bozeman.net/pratplan/maps/public-workshop-park-system-patterns?reporting=true#marker-61752	Opportunities	The Emerson Lawn will be a wonderful Middle of the City green space. During the summer the music there is great! We need inner city green space as more and more of the downtown becomes developed without trees, setbacks, or places to play.
45.69072	-111.07573	1105 Buckrake Avenue, Bozeman, Montana 59718, United States http://engage.bozeman.net/pratplan/maps/public-workshop-park-system-patterns?reporting=true#marker-61767	Opportunities	Nice quiet park. Many new trees planted. Some benches to sit and enjoy would be nice.
45.704921	-111.00431	2285 Boylan Road, Bozeman, Montana 59715, United States http://engage.bozeman.net/pratplan/maps/public-workshop-park-system-patterns?reporting=true#marker-63228	Opportunities	Ice rink
45.693137	-111.06247	1805 West Oak Street, Bozeman, Montana 59718, United States http://engage.bozeman.net/pratplan/maps/public-workshop-park-system-patterns?reporting=true#marker-65340	Barriers / Difficulties	N19th is a bike/ped barrier. Need safer crossing for east-west shared use paths.
45.692883	-111.04616	651 West Oak Street, Bozeman, Montana 59715, United States http://engage.bozeman.net/pratplan/maps/public-workshop-park-system-patterns?reporting=true#marker-65341	Barriers / Difficulties	N7th is a bike/ped barrier. Need safer crossing for east-west shared use paths.
45.690743	-111.08251	1079 New Holland Drive, Bozeman, Montana 59718, United States http://engage.bozeman.net/pratplan/maps/public-workshop-park-system-patterns?reporting=true#marker-65342	Opportunities	When Fowler Ave is constructed between Oak and Huffine...great opportunity to include shared use paths on both sides of the new street.
45.668311	-111.03551	1032 South Black Avenue, Bozeman, Montana 59715, United States http://engage.bozeman.net/pratplan/maps/public-workshop-park-system-patterns?reporting=true#marker-65343	Opportunities	Opportunity to add a dedicated paved bike path (paralleling the natural fines Gallagator Trail) that would connect MSU to downtown.
45.681771	-111.03579	209 North Black Avenue, Bozeman, Montana 59715, United States http://engage.bozeman.net/pratplan/maps/public-workshop-park-system-patterns?reporting=true#marker-65344	Opportunities	Opportunity to create a true bike boulevard along Black Ave connecting the Fairgrounds and the Gallagator Trail (at College Ave). This would be an important north-south bike corridor.
45.679118	-111.02573	712 East Main Street, Bozeman, Montana 59715, United States http://engage.bozeman.net/pratplan/maps/public-workshop-park-system-patterns?reporting=true#marker-74307	Opportunities	Buy this property to enhance park access and keep from development. Use for connecting the trail (Gallagator)along the creek to this crossing to access Broadway and future trail system to depot, etc.
45.682978	-111.01537	1507 Cedar Street, Bozeman, Montana 59715, United States http://engage.bozeman.net/pratplan/maps/public-workshop-park-system-patterns?reporting=true#marker-74308	Opportunities	Reinforce Rianna pin - extend the trail along the nature preserve on the old RR berm to a bridge crossing 90, that probably was there years ago. Use for access to Story Mill and future trails alone E. Gallatin and nearby foothills
45.690563	-111.00693	Story Hill Trail, Bozeman, Montana 59715, United States http://engage.bozeman.net/pratplan/maps/public-workshop-park-system-patterns?reporting=true#marker-74309	Opportunities	Work with owner for permanent easement to Story Hills Trails and connect them down thru hills to E. Gallatin and to future trail over 90 and to Story Mill Park with trails along E. Gallatin by buying easements.
45.656198	-111.00045	Bozeman Trail Road, Bozeman, Montana 59715, United States http://engage.bozeman.net/pratplan/maps/public-workshop-park-system-patterns?reporting=true#marker-74310	Opportunities	Buy easement for trail from under Kagy to the County land along subdivision hills to State Land and build new trail to connect to "New Painted Hills Trail" where it is on State Land. Underpass to Painted Hills Trails would improve safety of crossing Kagy and buying small area at this corner would add parking to the small lot with access to subdivision trail west of this corner.
45.666306	-111.05183	The Duck Pond, 11th St, Bozeman, Montana 59715, United States http://engage.bozeman.net/pratplan/maps/public-workshop-park-system-patterns?reporting=true#marker-74882	Places	Duck Pond is a staple of the MSU campus and attracts use throughout the year. More traffic calming on 11th could improve its accessibility to the broader community.
45.678436	-111.09807	4281 West Babcock Street, Bozeman, Montana 59718, United States http://engage.bozeman.net/pratplan/maps/public-workshop-park-system-patterns?reporting=true#marker-74883	Barriers / Difficulties	Traffic Calming on Babcock is critical as promoting access to this park. Bike lane on Babcock is a step, but decreasing the width of the road and more trees close to the street edge would slow traffic more naturally on this corridor and improve multimodality.

45.664266	-111.03071	1417 South Church Avenue, Bozeman, Montana 59715, United States http://engage.bozeman.net/pratplan/maps/public-workshop-park-system-patterns?reporting=true#marker-74884	Opportunities	Improvement of crossing, connecting the neighborhood west of Church to the Burke Park system.
45.700365	-111.02765	700 East Griffin Drive, Bozeman, Montana 59715, United States http://engage.bozeman.net/pratplan/maps/public-workshop-park-system-patterns?reporting=true#marker-75561	Opportunities	Consider open hours for the gym in the winter for basketball/indoor sports as opportunities for indoor recreation during the colder months in limited.
45.701182	-111.02696	75 Bridger Drive, Bozeman, Montana 59715, United States http://engage.bozeman.net/pratplan/maps/public-workshop-park-system-patterns?reporting=true#marker-75562	Opportunities	An Ice Rink in this grass square would be great to activate Story Mill Park in the winter months.
45.706172	-111.01385	1620 Boylan Road, Bozeman, Montana 59715, United States http://engage.bozeman.net/pratplan/maps/public-workshop-park-system-patterns?reporting=true#marker-75563	Opportunities	Pickle Ball/Basketball court - sport amenities are lacking on this end of town.