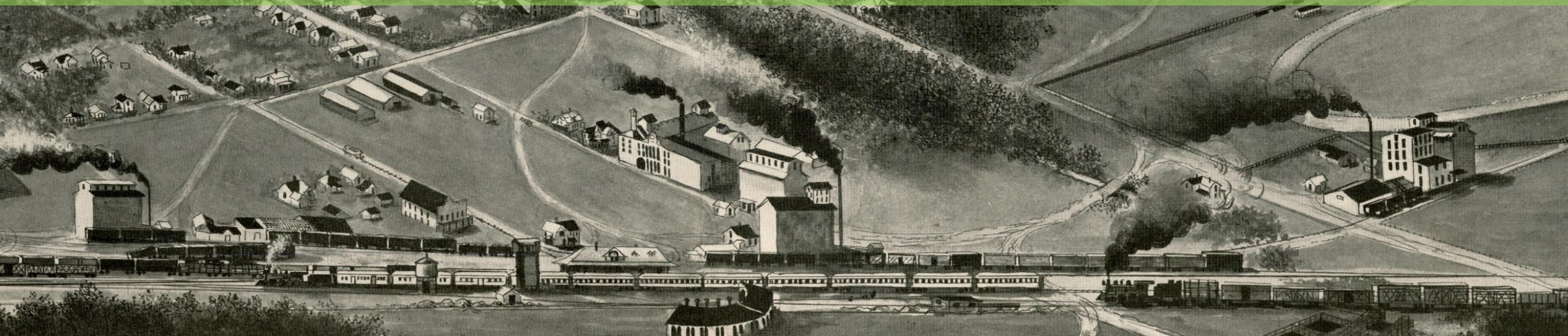




2022 Bozeman Historic Preservation Awards



HISTORIC PRESERVATION ADVISORY BOARD MEMBERS

Savannah Donnelly - Chair

Linda Semones - Vice Chair

LaDeen Arthun

Jacey Anderson

Elizabeth Darrow

Chelsea Holling

Christopher Coburn - Commission Liaison

Sarah Rosenberg - Staff Liaison

A historical black and white photograph of a busy street scene. In the background, a large, ornate building with a prominent tower and a diamond-patterned facade. The street is filled with a large crowd of people, many wearing hats and long coats. In the foreground, several horse-drawn carriages and a few early 20th-century automobiles are visible. The overall atmosphere is that of a bustling, early 20th-century urban environment.

Outstanding Achievement in:

Restoration/Rehabilitation Residential Property

208 LINDLEY PLACE – JESS POPE RESIDENCE

- Built in 1919
- Original footprint preserved
- Back porch added
- Elements saved include wood floor and chimney
- Rehabilitated to maintain the character of the house and the area



208 LINDLEY PLACE JESS POPE RESIDENCE



- Owner – Jess Pope
- Architect – Lotus Greiner, Love Schack Architecture (at time of project), now Thruline Partners
- Contractor – Hilgard Construction

A historical black and white photograph of a busy street scene. In the background, a large, ornate building with a prominent tower and a diamond-patterned facade. The street is filled with people, horse-drawn carriages, and early automobiles. Utility poles and wires are visible overhead.

Outstanding Achievement in:

**Restoration/Rehabilitation
Commercial Property**

GALLATIN LAUNDRY BUILDING

- Built in 1915
- Designed by Fred Willson
- Operated as laundry business from 1917-2018, was the longest running family business in Bozeman
- Restored in 2021 to serve as a retail space



GALLATIN LAUNDRY BUILDING



- Owner – Virga Capital
- Architect – Minarik Architecture
- General Contractor – Langlas & Associates



Restoration/Rehabilitation Commercial Property

A black and white historical photograph of a busy street scene. In the foreground, a large crowd of people, many wearing hats, is gathered on the sidewalks and in the street. Several horse-drawn carriages are visible, with people seated inside. A few early 20th-century automobiles are also present. In the background, a large, ornate building with a prominent tower and a diamond-patterned facade is the central focus. The street is wide and appears to be a main thoroughfare. The overall atmosphere is one of a significant public event or a busy day in a past era.

Outstanding Achievement in:

Preservation Legacy

SAMUEL LEWIS HOUSE



- Built in 1881 by Samuel Lewis, a native of the West Indies and skilled barber
- Shared his success with sister Edmonia Lewis, a gifted sculptor
- Owned by Eileen & Richard Tenney since 1975
- Placed on National Register in 1998

SAMUEL LEWIS HOUSE



- Owner – Eileen & Richard Tenney

A black and white historical photograph of a busy street scene. In the foreground, a large crowd of people, many wearing hats, is gathered on the sidewalks and in the street. Several horse-drawn carriages are visible, some with people inside. A man is riding a bicycle in the lower right. In the background, a large, ornate building with a prominent tower and a diamond-patterned facade is visible. The street is wide and appears to be a main thoroughfare. The overall atmosphere is one of a significant public event or a busy day in a past era.

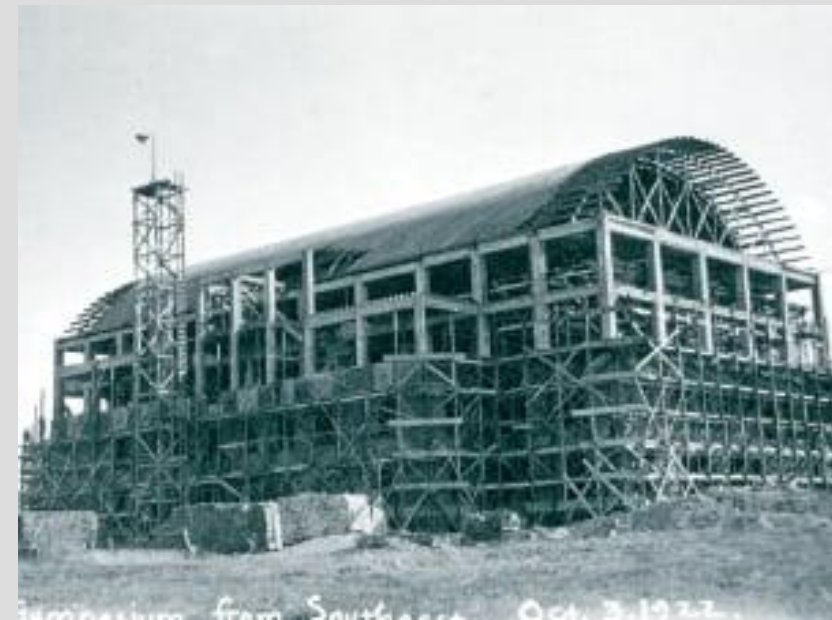
Outstanding Achievement in:

Adaptive Reuse

ROMNEY HALL AT MSU



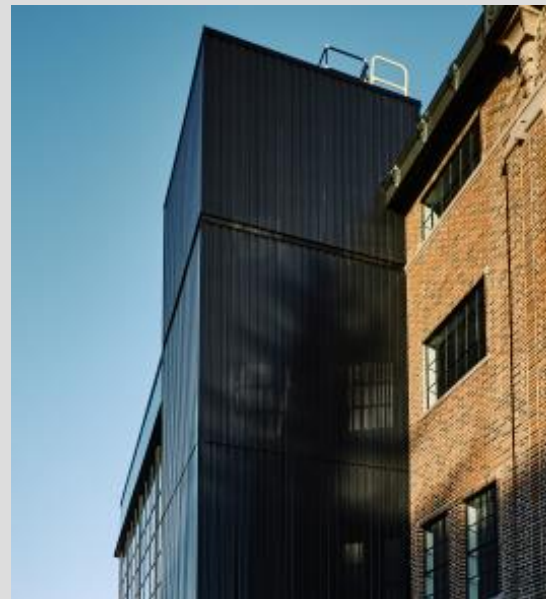
- Built in 1920 as a gym
- Renovations started in 2012 to provide classroom space and student services
- Doors opened in Fall 2021
- Project received LEED Gold Certification



ROMNEY HALL AT MSU



- Owner – State of Montana A&E Division
- Agency – Montana State University
- Architect – Cushing Terrell
- General Contractor – Swank Enterprises



A black and white historical photograph of a busy street scene. In the background, a large, ornate brick building with a prominent tower and a diamond-patterned facade is visible. The street is filled with a large crowd of people, many wearing hats and coats. Several horse-drawn carriages are in the foreground, and a few early 20th-century automobiles are also present. The overall atmosphere is one of a significant public event or gathering.

Outstanding Achievement in:

Preservation Stewardship

MOUNTAIN TIME ARTS – LIGHTING OF THE TEEPEES



MOUNTAIN
TIME ARTS



- 7 illuminated teepees located on Peets Hill for 10 days in October
- Supports “Proclamation to Recognize and Celebrate Indigenous Peoples’ Day” – October 11
- Honors the longer history of Indigenous cultures of our area
- Installed on ancestral lands and traditional use area of the Bitterroot Salish, Pend d’Oreilee, Kootenai, Blackfeet, Northern Cheyenne, Crow, Chippewa Cree, Assiniboine, Gros Ventre, Dakota, and other Indigenous nations of this region

MOUNTAIN TIME ARTS – LIGHTING OF THE TEEPEES



- Collaboration effort between Mountain Time Arts, Pretty Shield Foundation, and the Rocky Mountain Tribal Leaders Council and the City of Bozeman



A black and white historical photograph of a busy street scene. In the foreground, a large crowd of people, many wearing hats, is gathered on the sidewalks and in the street. Several horse-drawn carriages are visible, with people seated inside. A man is riding a bicycle in the lower right. In the background, a large, ornate building with a prominent tower and a diamond-patterned facade is visible. The street is wide and appears to be a main thoroughfare. The overall atmosphere is one of a significant public event or a busy day in a past era.

Outstanding Achievement in:

Smart Growth Excellence

RSVP MOTEL



- Built in 1947, added to in 1968
- Major additions and extensive model in 2018
- Maintained inner courtyard, pool, and historic sign
- Café/restaurant added to structure



RSVP MOTEL



- Owners – Hillary & Haylee Folkvord
- Architect – Love Schack Architecture
- Interior Designer – Abby Hetherington Interiors
- General Contractor – BBG Contractors

A black and white historical photograph of a busy street scene. In the foreground, a large crowd of people, many wearing hats, is gathered on the sidewalks and in the street. Several horse-drawn carriages are visible, with people seated inside. A man is riding a bicycle in the lower right. In the background, a large, ornate building with a prominent tower and a diamond-patterned facade is visible. The street is wide and appears to be a main thoroughfare. The overall atmosphere is one of a significant public event or a busy day in a past era.

Outstanding Achievement in:

Landscape Design

CANNERY DISTRICT



- Founded in 1917 – Bozeman Canning Company
- “Sweet Pea Capital of the Nation” – produced 13,000 cans daily
- Transformed into a vibrant gathering mixed use development
- Native landscaping unifies the interior and exterior spaces to promote growth and honor the site’s character



CANNERY DISTRICT



- Owner – Cannery District Partners
- Landscape Designer – Linda Iverson
- Landscaper – Valley of the Flowers
- Landscape Architect – Design 5
- Architects – Comma-Q Studio, Minarik Architecture
- Engineer – Stahly Engineering



A black and white historical photograph of a busy street scene. In the foreground, a large crowd of people, many wearing hats, is gathered on the sidewalks and in the street. Several horse-drawn carriages are visible, some with drivers and passengers. A vintage automobile is also present on the left side of the street. In the background, there are large, multi-story buildings with ornate architectural details, including a prominent tower with a conical roof. Utility poles with power lines are visible along the street. The overall atmosphere is that of a significant public event or a busy day in a past era.

Outstanding Achievement in:

Signage Restoration

THE ELLEN THEATER



- Built in 1919
- Designed by Fred Willson
- Sign and marquee went through many renditions over the years
- Restored in 2019

THE ELLEN THEATER



- Owner – Montana TheatreWorks
- General Contractor – Martel Construction
- Electric Contractor – Vos Electric
- Architects – Frank Cikan
- Design Company – Brandner Design
- Sign Firm – Media Station Design Works
- Stained Glass – David Fjeld



A black and white historical photograph of a busy street scene. In the foreground, a large crowd of people, many wearing hats, is gathered on the sidewalks and in the street. Several horse-drawn carriages are visible, with people seated inside. A man is riding a bicycle in the lower right. In the background, a large, ornate building with a prominent tower and a diamond-patterned facade is visible. The street is wide and appears to be a main thoroughfare. The overall atmosphere is one of a significant public event or a busy day in a past era.

Outstanding Achievement in:

Cultural Heritage

AMERICAN INDIAN HALL AT MSU



- Opened on October 16, 2021
- Earned LEED Platinum
- Montana's first land-grant institution
- Includes student commons, classrooms, office space, gallery space, and dedicated spaces for gatherings

AMERICAN INDIAN HALL AT MSU



- Agency – Montana State University, Department of Native American Studies
- Architect – ThinkOne Architects, TSP Architecture
- General Contractor – Swank Enterprises
- Landscape Architect – Design 5 Landscape Architecture



Thank you for attending!
See you next year!

