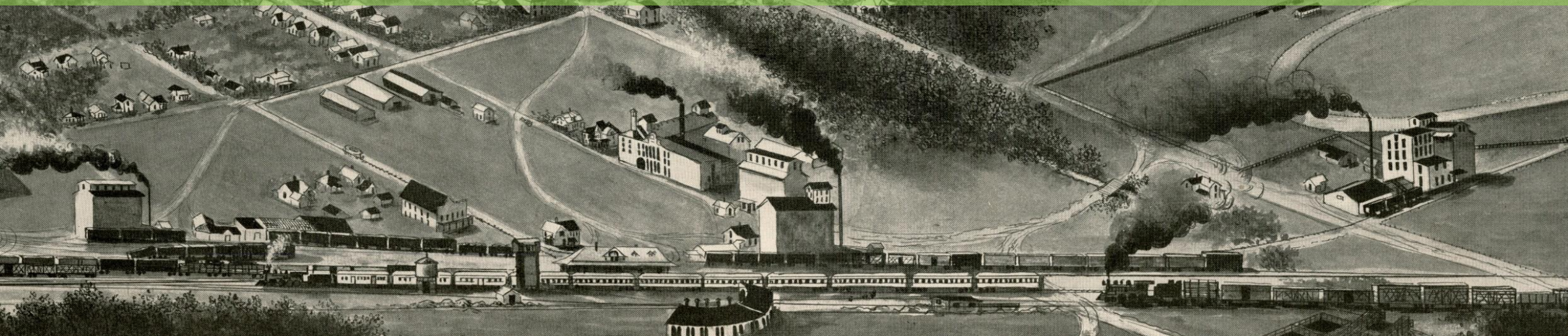




2023 Bozeman Historic Preservation Awards



HISTORIC PRESERVATION ADVISORY BOARD MEMBERS

Savannah Donnelly – Chair

Linda Semones – Vice Chair

Elizabeth Darrow

Chelsea Holling

Mike Wiseman

Allyson Brekke

Christopher Coburn – Commission Liaison

Sarah Rosenberg – Staff Liaison

Claire Morrison – Meeting Assistant

Hosted by the Historic Preservation Advisory Board

The Roots



of our History

Historic Preservation Month

May 2023

HISTORIC PRESERVATION MONTH



WHAT IS THE HISTORIC PRESERVATION ADVISORY BOARD?

- Their role is to help promote and educate the community on preservation efforts
- Made up of 7 volunteer community members
- Three members with disciplines in planning, architecture, history, archeology, or other historic preservation related disciplines
- One registered architect
- One member who lives in a Historic District
- Two at-large members
- Serve 2 year terms

FRED WILLSON MULTIPLE PROPERTY DOCUMENTATION



612 W Story



412 W Cleveland



405 W Cleveland



804 S Willson



1 W Garfield



36 W Main



616 S Grand



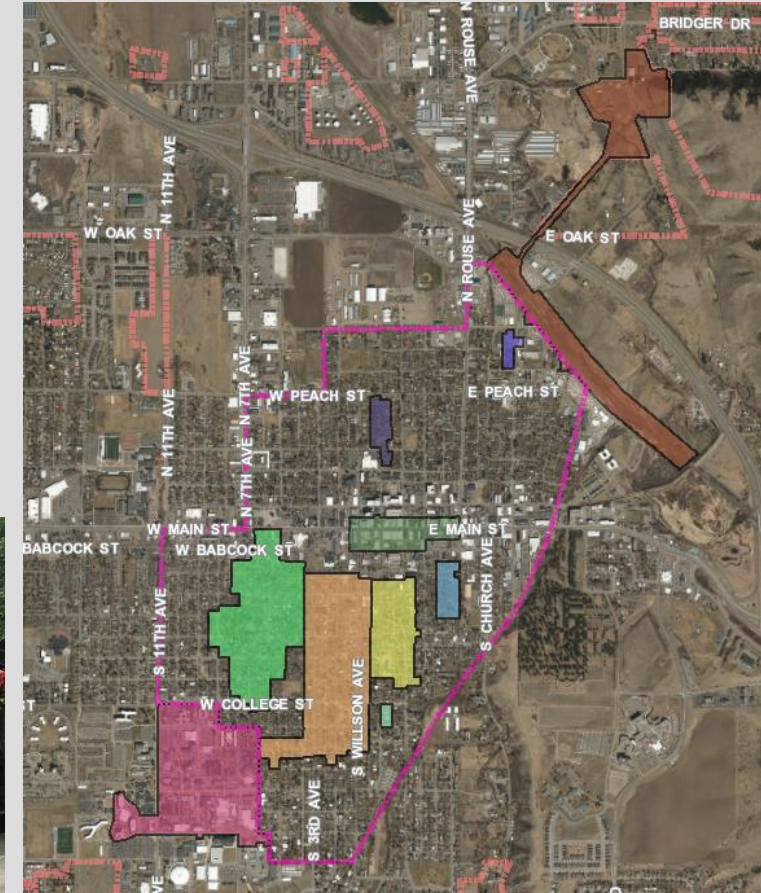
17 W Main

FUTURE ENDEAVORS FOR THE HISTORIC PRESERVATION ADVISORY BOARD

- Heritage Tree Program
- Bozeman's most important historic resources
- Historic inventory surveying – highlighting underrepresented communities
- Interested in getting involved? HPAB has an open at-large seat. Apply at <https://www.bozeman.net/departments/city-commission/advisory-boards/apply-for-an-advisory-board>

CITY OF BOZEMAN HISTORIC PRESERVATION PROGRAM

- Neighborhood Conservation Overlay District (NCOD) created in 1991
- Over 4000 properties within the NCOD
- There are 10 nationally registered Historic Districts and 46 properties on the National Register of Historic Places



IT'S TIME FOR A CHANGE – WE NEED TO EVOLVE HISTORIC PRESERVATION TO BE MORE REALISTIC, EQUITABLE, AND INCLUSIVE



ISSUES IN PRESERVATION POLICY

— Preservation and Social Inclusion —
— Preservation's Reckoning —
— Examining Questions of Exclusion —
— Shifting Policy Toward Inclusion —
— Challenging and Redefining Narratives —
— Connecting to Community Development —
— Edited by Erica Avrami

Preservation for People:
A Vision for the Future

MAY 2017



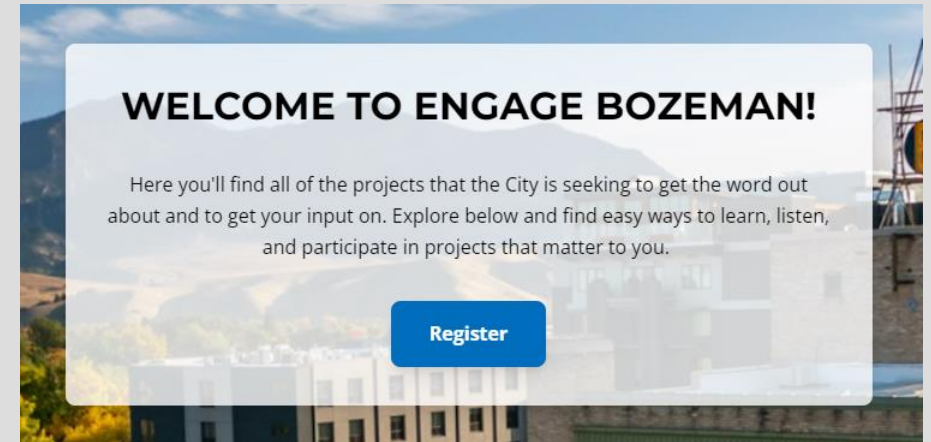
HISTORIC PRESERVATION IN RELATED CITY PROJECTS

- Equity and Inclusion Plan – Historical narrative
- Unified Development Code rewrite

<https://engage.bozeman.net/>

srosenberg@bozeman.net

406-582-2297



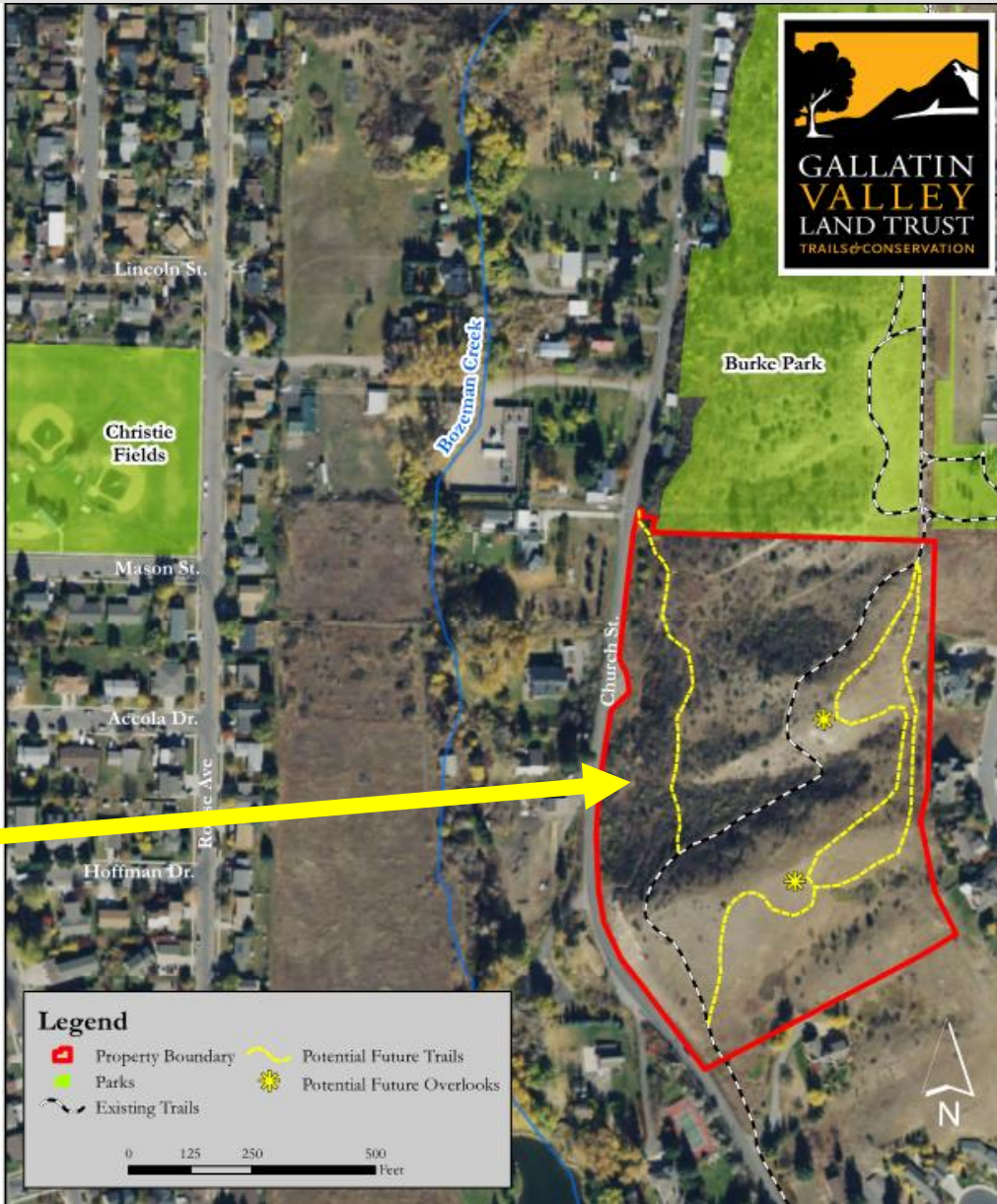
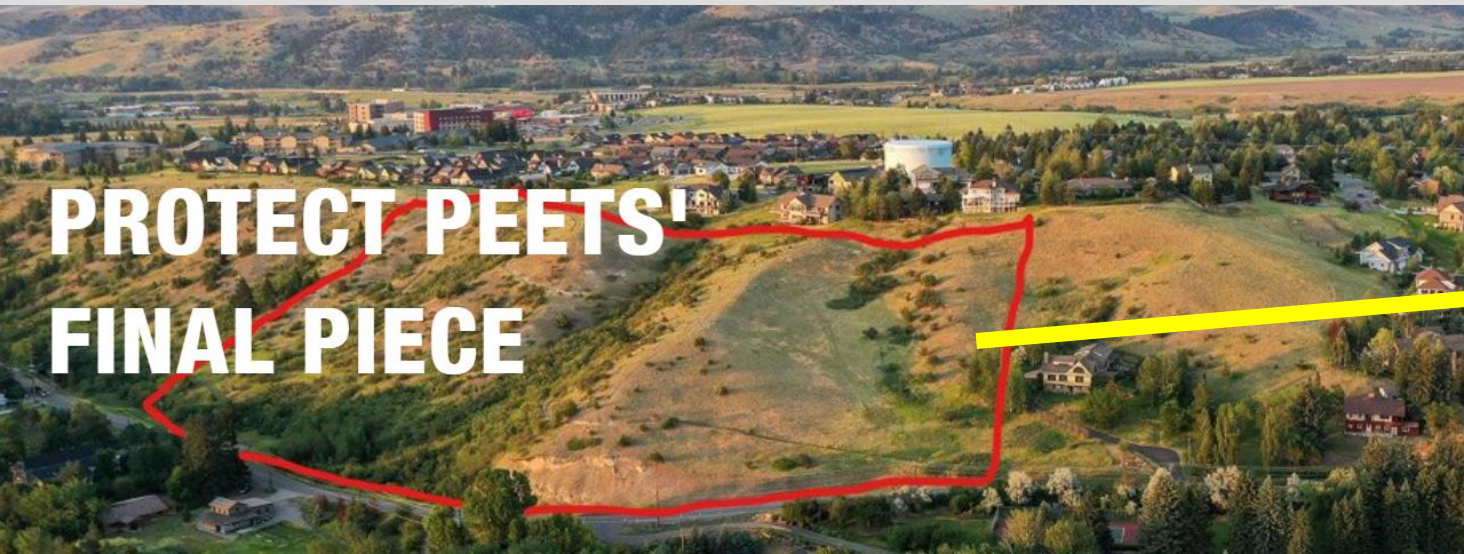
**Belonging in
Bozeman - Equity &
Inclusion Plan**

A black and white historical photograph of a busy street scene. In the foreground, a large crowd of people, mostly men in suits and hats, is gathered on the sidewalks and in the street. Several horse-drawn carriages are visible, with people seated inside. A few early 20th-century automobiles are also present. In the background, a large, ornate brick building with a prominent tower and a diamond-patterned facade is the central focus. The street is wide and appears to be a main thoroughfare. The overall atmosphere is one of a significant public event or a busy day in a past era.

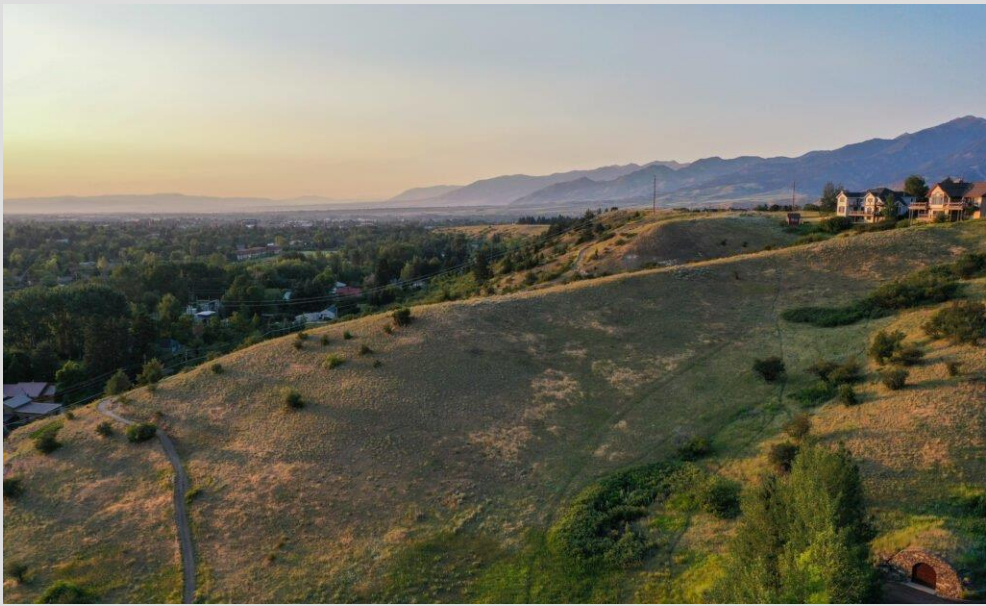
Outstanding Achievement in:

Preservation Stewardship

GALLATIN VALLEY LAND TRUST – PEETS HILL



GALLATIN VALLEY LAND TRUST – PEETS HILL



Photos by Louise Johns

4 Thursday, December 20, 1990

OUR OPINION

Keep Bozeman livable

City leaders are wise to join the rush for Peet's Hill acreage

Developments and development proposals are springing up around us fast and furiously.

There isn't a dry spot with a view in the valley right now that someone doesn't have their eyes on.

So the scramble to develop or preserve — depending on who you talk to — the 40-acre hillside that stretches almost south to north on the east edge of the city should come as no surprise.

Wisely, the city has decided to join the land rush.

This week, city officials announced that they will try to buy the stretch of undeveloped land that spans Sourdough Ridge and includes Peets' Hill, a beloved sledding slope.

City commissioners approved dipping into the city's park acquisition fund for this goal. This is exactly how this fund, which is fed by money developers have paid the city in lieu of building required parks in their subdivisions, should

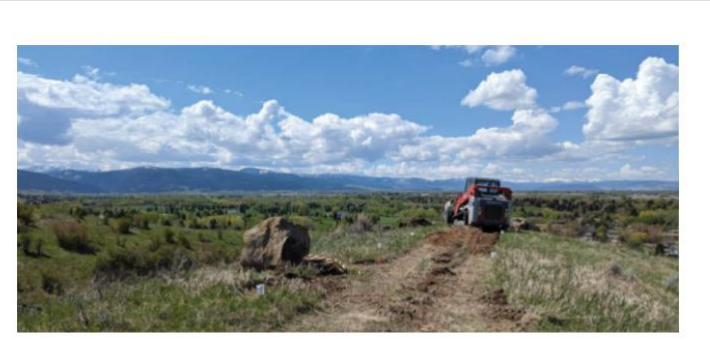
be used.

City officials also are talking about joining forces with the non-profit, Gallatin Valley Land Trust, which is also trying to make sure the land doesn't fall into the hands of developers. And there is talk of funding the purchase of the land through the issuance of bonds.

Meanwhile, petitions are being circulated madly around town in an effort to arouse the town's sentiments for preserving this valuable open space.

There is probably not a person in this city who has either wandered along that ridge and marveled at the mountains ringing this valley, or who hasn't looked up at that ridge and found a dose of visual relief from this bustle of the city. A quality of a truly liveable city is this kind of wild, undeveloped, unmanicured open space just seconds from city center.

The city should continue to explore every possible option to make sure this land is not developed, because if Bozeman is going to someday succeed in linking all the city parks with a blend of hiking, jogging, skiing and mountain bike trails — this stretch of land will prove to be the backbone.



TRAIL REHABILITATION PROJECTS TO KICK OFF ON NEW 12 ACRES ON PEETS HILL

May 18, 2023

A historical black and white photograph of a busy street scene. In the foreground, a large crowd of people, many wearing hats, is gathered on the sidewalks and in the street. Several horse-drawn carriages are visible, with people seated inside. A man in a suit is standing near a horse-drawn carriage in the center. To the left, a vintage automobile is parked. In the background, a large, ornate building with a prominent tower and a diamond-patterned facade is visible. The street is wide and appears to be a main thoroughfare. The overall atmosphere is one of a significant public event or a busy day in a past era.

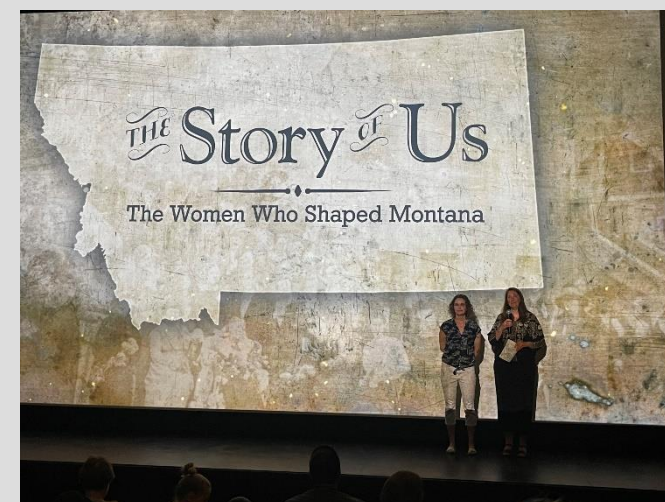
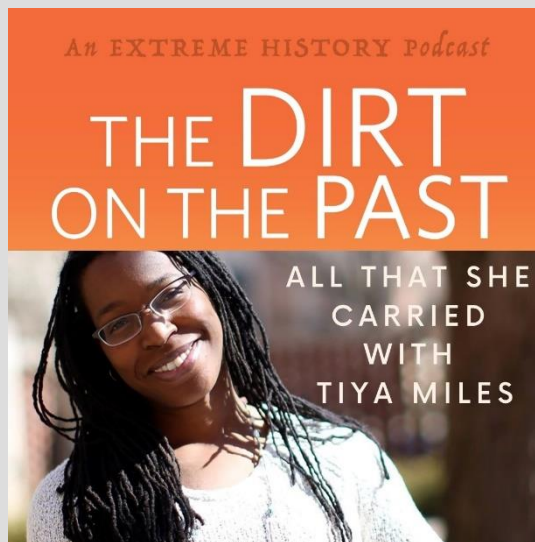
Outstanding Achievement in:

Cultural Heritage

SHANE DOYLE



THE EXTREME HISTORY PROJECT



A black and white historical photograph of a busy street scene. In the foreground, a large crowd of people, mostly men in suits and hats, is gathered on the sidewalks and in the street. Several horse-drawn carriages are visible, some with drivers and passengers. A few early 20th-century automobiles are also present. In the background, a large, ornate brick building with a prominent tower and a diamond-patterned facade is the central focus. The street is wide and appears to be a main thoroughfare. The overall atmosphere is one of a significant public event or a busy day in a past era.

Outstanding Achievement in:

Restoration/Rehabilitation

THE LOVELACE BUILDING



THE LOVELACE BUILDING

Madison Valley Partners

Miller Roodell Architects

NorthFork Builders

Bridger Engineers

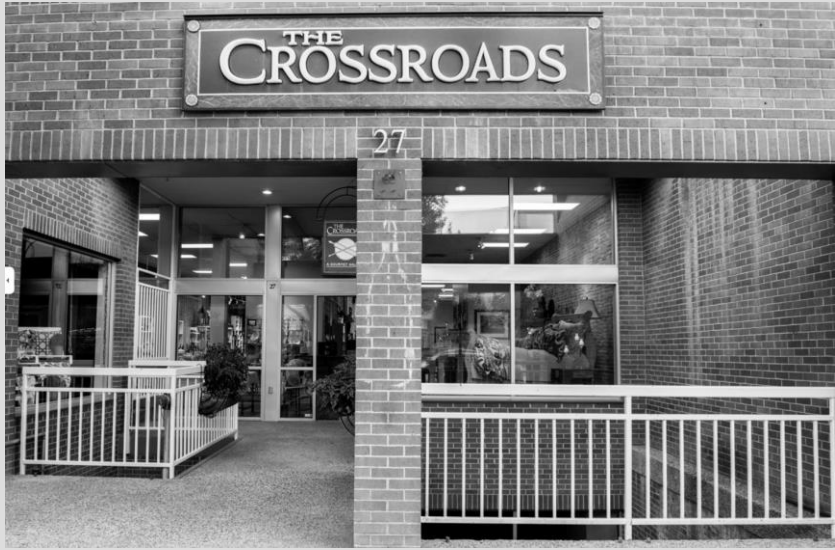


A black and white historical photograph of a busy street scene. In the background, a large, ornate building with a prominent tower and a diamond-patterned facade is visible. The street is filled with a large crowd of people, many wearing hats and coats. Several horse-drawn carriages are in motion, and a few early 20th-century automobiles are also present. The overall atmosphere is one of a significant public event or a busy day in a past era.

Outstanding Achievement in:

Smart Growth Excellence

J.W. HEIST STEAKHOUSE



Peace Design

Brett Evje

Michael Ochsner

Pearson Design Group

Lohss Construction

Smart Growth Excellence

A historical black and white photograph of a busy street scene. In the foreground, a large crowd of people, many wearing hats, is gathered on the sidewalks and in the street. Several horse-drawn carriages are visible, with people seated inside. A man in a suit is standing near a horse-drawn carriage in the center. To the left, a vintage automobile is parked. In the background, a large, ornate building with a prominent tower and a diamond-patterned facade is visible. The street is wide and appears to be a main thoroughfare. The overall atmosphere is one of a significant public event or a busy day in a historical town.

Outstanding Achievement in:

Landscape Design

ROBIN BOSLEY – 306 E. STORY

Landscape Design



A black and white historical photograph of a busy street scene. In the foreground, a large crowd of people, many wearing hats, is gathered on the sidewalks. Several horse-drawn carriages are visible, some with drivers and passengers. A vintage automobile is also present on the left. The street is wide and appears to be paved with cobblestones or similar material. In the background, there are several large, multi-story buildings. One prominent building on the left has a decorative facade with a diamond pattern. A tall, ornate tower with a conical roof is visible in the center background. Utility poles with power lines are scattered throughout the scene. The overall atmosphere is that of a bustling, early 20th-century town square or main street.

Outstanding Achievement in:

Signage Restoration

THE SAPPHIRE MOTEL



THE SAPPHIRE MOTEL





Thank you for attending!
See you next year!

