

STUDY AREA BOUNDARY

Technical Memorandum
FINAL



October 2, 2015



prepared by:

**Robert Peccia &
Associates**

www.rpa-hln.com

prepared for:

City of Bozeman & Montana Department of Transportation

TABLE OF CONTENTS

Table of Contents..... **i**
 List of Figures..... i
Abbreviations / Acronyms **ii**
1.0. Introduction..... **1**
 1.1. Previous Study Area Boundary 1
 1.2. Deletions to the Study Area Boundary 1
 1.3. Additions to the Study Area Boundary..... 3
 1.4. New Study Area Boundary 3

LIST OF FIGURES

Figure 1: 2007 Study Area Boundary 2
 Figure 2: Additions to Study Area Boundary 4
 Figure 3: Study Area Boundary 5

The City of Bozeman, MDT and RPA attempt to provide accommodations for any known disability that may interfere with a person participating in any service, program, or activity associated with this study. Alternative accessible formats of this information will be provided upon request. For further information, call (406) 447-5000 or (406) 582-2280. Accommodation requests must be made at least 48 hours prior to the scheduled activity and / or meeting.

ABBREVIATIONS / ACRONYMS

MDT	Montana Department of Transportation
TMP	Transportation Master Plan
TWG	Technical Working Group

Study Area Boundary

1.0. INTRODUCTION

The City of Bozeman and the Montana Department of Transportation (MDT) have initiated a community transportation planning process to develop a Transportation Master Plan (TMP). A previous Transportation Plan was completed in 2007 which provides a blueprint for guiding transportation infrastructure investments based on system needs and associated decision making principles. Rapid growth, changes in land use, substantial upgrades to the community's transportation system, and the community's increasing interest in transportation related matters have necessitated a new examination of transportation issues within the Bozeman area.

Transportation plans generally begin by defining the study area. Sometimes the study area follows governmental boundaries such as city limits, but most often they include some land immediately outside existing city limits in which future growth is seen as likely to occur. As a part of this TMP's development, a cursory review of the preliminary study area boundary provided by the City of Bozeman was undertaken. Subsequently, slight adjustments are recommended to be made to the study area boundary as described in this document.

1.1. PREVIOUS STUDY AREA BOUNDARY

The study area boundary for the previous Transportation Plan completed in 2007 is shown on **Figure 1**. The area included Bozeman, Four Corners, Gallatin Gateway, and unincorporated lands where development had been occurring or was anticipated as likely to occur. The previous study area boundary is much larger than that envisioned for this TMP. Generally, the 2007 study area boundary extended to the Gallatin River (to the west), Cottonwood Road (to the south), Spain Bridge Road (to the north), and Bozeman Pass (to the east).

1.2. DELETIONS TO THE STUDY AREA BOUNDARY

Much of the unincorporated area contained in the 2007 study area boundary is not included in the new boundary. Generally, the 2007 boundary has been shrunk by approximately two miles from the south, west and north. This has been modified due to Gallatin County being somewhat comfortable with their existing level of transportation planning in these areas. Land use changes within the unincorporated areas will be factored in to this TMPs development, however.

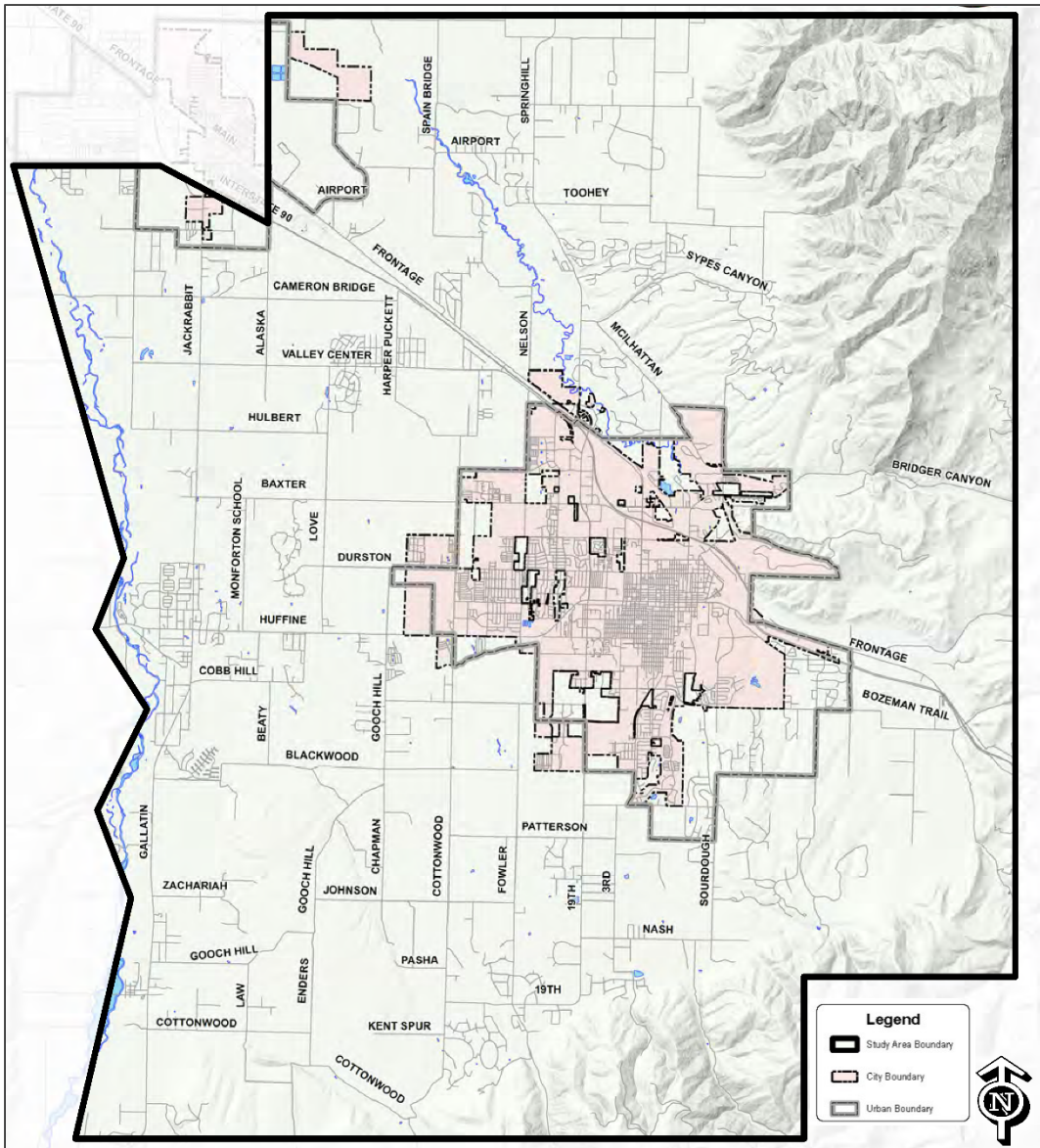


Figure 1: 2007 Study Area Boundary

1.3. ADDITIONS TO THE STUDY AREA BOUNDARY

The study area boundary initially defined for this TMP includes the entire city limits of Bozeman, as well as some unincorporated lands surrounding Bozeman. The study area boundary was based on the boundary found within the current Bozeman Community Plan. After reviewing the study area boundary with the Technical Working Group (TWG), it is recommended to enlarge the study area boundary slightly to fully encompass the 2010 Urban Boundary as defined in the 2010 Census, and to capture some land that is recently being explored for development (by others) north of Interstate 90 and west of Springhill Road, in the vicinity of Nelson Road. This expansion is shown graphically on **Figure 2**.

1.4. NEW STUDY AREA BOUNDARY

The new study area boundary is shown on **Figure 3** and will be used for all aspects of the TMP process. This study area boundary includes major employers in the area, as well as land that may be used for employment centers in the next twenty years that could possibly be annexed into the city limits. It also includes densely developed residential land uses in the area, and those areas likely to increase the housing supply in the future and subsequently add traffic onto the transportation network. Lastly, the new boundary includes the entire urban boundary limits that resulted from the 2010 Census.

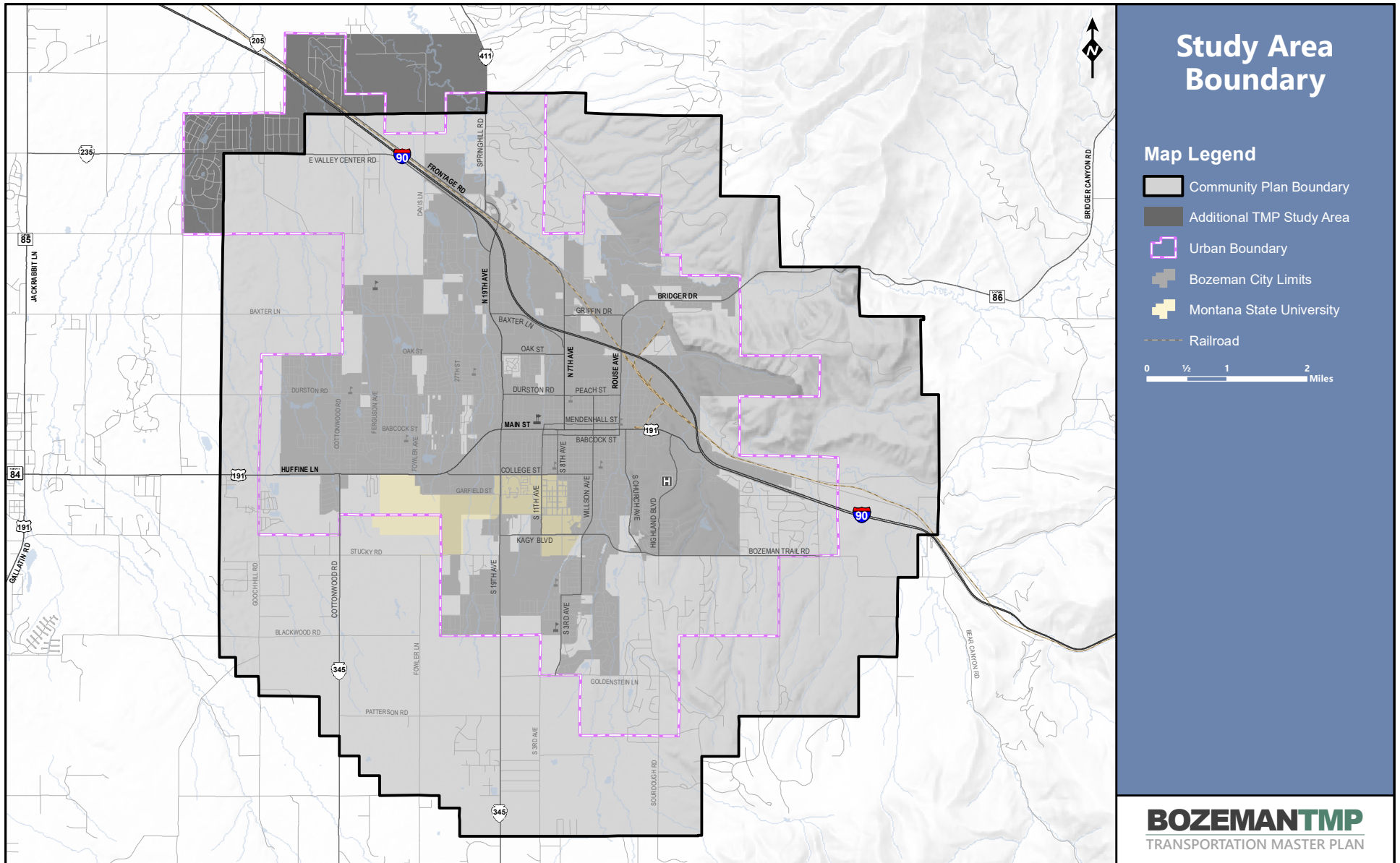
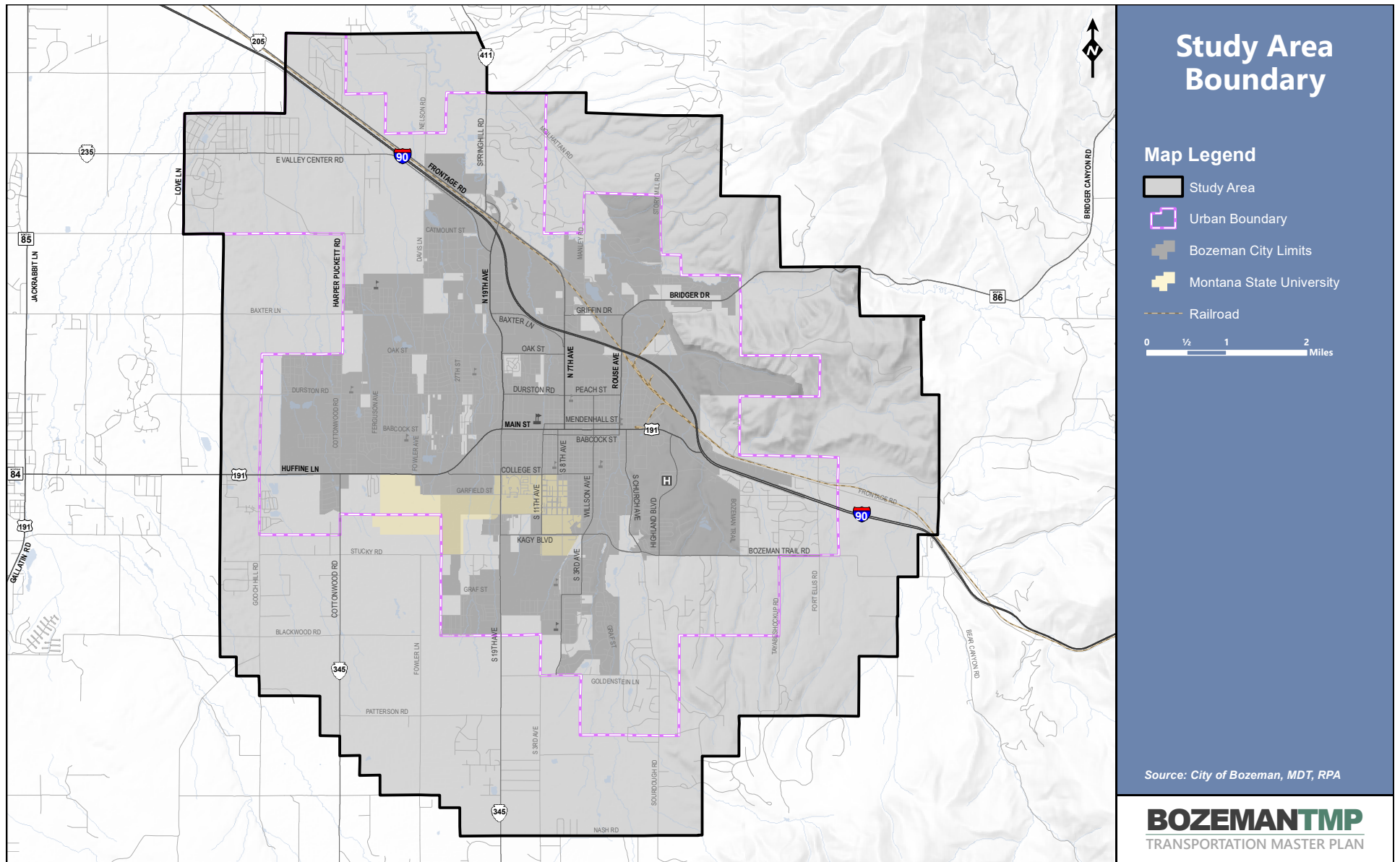


Figure 2: Additions to Study Area Boundary



Study Area Boundary

Map Legend

- Study Area
 - Urban Boundary
 - Bozeman City Limits
 - Montana State University
 - Railroad
- 0 1/2 1 2 Miles

Source: City of Bozeman, MDT, RPA

Figure 3: Study Area Boundary