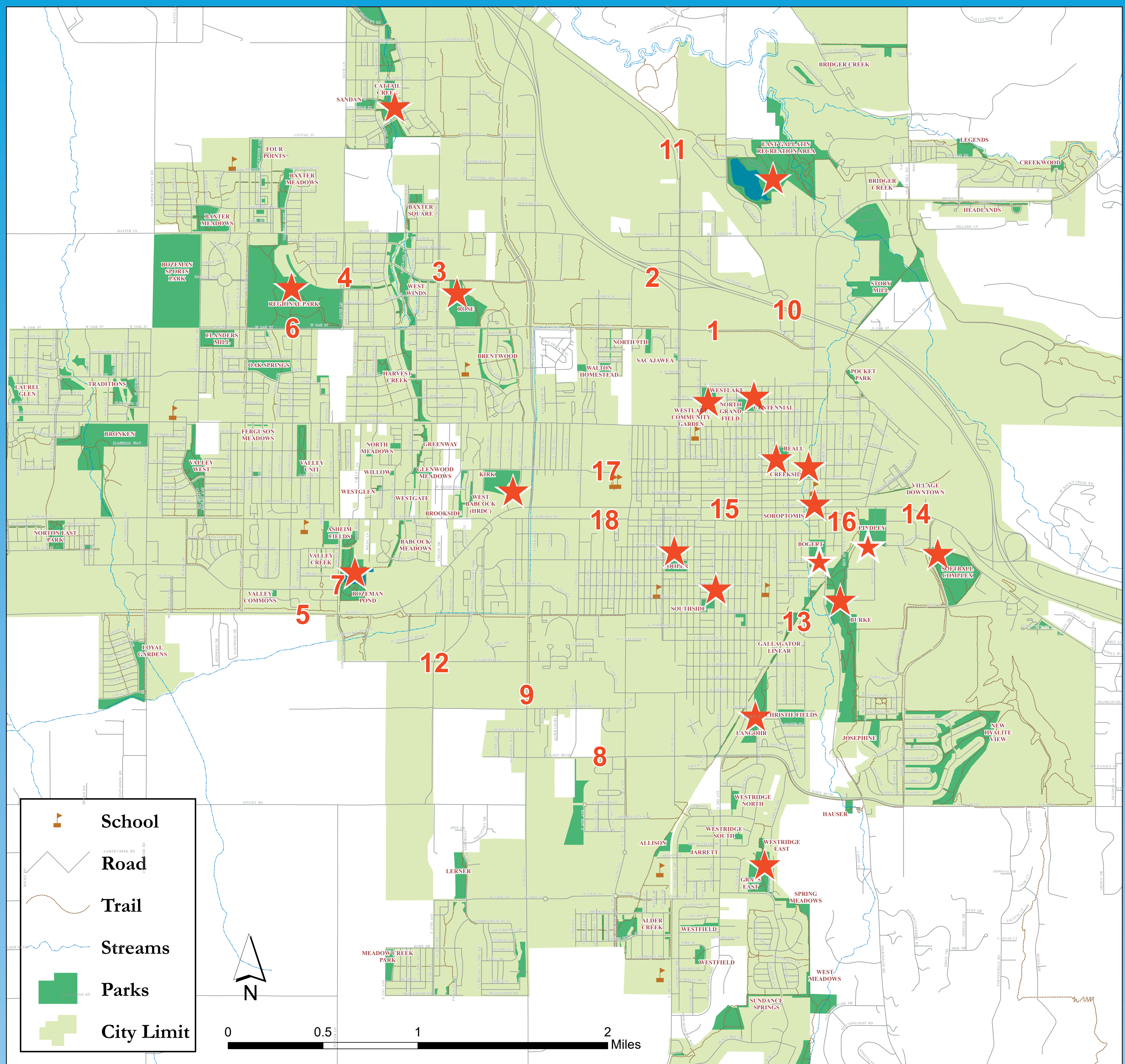


BOZEMAN CLEANUP

**NOT SURE WHERE TO CLEAN UP?
CHECK OUT THESE AREAS!**

Once you've chosen a location, snap a picture of it with your phone and let a CleanUp Day volunteer know where you're going.





BOZEMAN CLEANUP

NOT SURE WHERE TO CLEANUP? CHECK OUT THESE AREAS!

Once you've chosen a location, snap a picture of it with your phone and let a CleanUp Day volunteer know where you're going.

Area Most In-Need Of Clean Up:

1. **West Oak St.:** From Rouse heading west to N. 7th Ave. (Special attention to the north side of Oak and around the old Kmart parking lot and the south side around Walmart parking lot.)
2. **Baxter Lane:** From N. 7th west to S. 19th.
3. **North 27th Ave.:** From Baxter Ln. south to W. Oak St. (Special attention to the east side of 27th.)
4. **Davis Lane:** From Baxter Ln south to W. Oak St.
5. **Huffine Lane:** From the Gallatin Mall area west to Ferguson.
6. **Ferguson/Babcock (around the sports park)**
7. **Fowler Ave:** From the traffic light at Main St. north to Babcock St. (Special attention to litter in the bank of willow trees bordering the Bozeman Ponds Park.)
8. **Kagy Blvd:** From S. 19th east to 11th Ave.
9. **South 19th Ave.:** From College St. south to Stucky Rd.
10. **Interstate 90:** From E. Main exit to 19th Ave. exit.
11. **Frontage Rd:** From N. 7th west for several miles.
12. **West Garfield St.:** From th west to the light at Fowler and Main St.
13. **Gallagator Trail**
14. **East Main Street:** From the interstate to Broadway.
15. **Downtown Area:** Alleys behind Main Street, public and private parking lots, greenspaces.
16. **Library Grounds:** Front and back along trails and in parking lot.
17. **High School Grounds:** Track area, fields, parking lots.
18. **West Babcock:** Behind Subway and Starbucks.

City Parks/Greenspaces:

- East Gallatin Recreation Area
- Regional Park/Dinosaur Playground
- Rose Park
- Kirk Park
- Lindley Park
- Bozeman Pond
- BMX Park
- Centennial Park
- Beall Park
- Sports Complex near Highland Blvd.
- Peet's Hill/Burke Park
- Cooper Park
- Bogert Park
- Langhor Park
- Graf's Park
- MSU Duck Ponds
- Cattail Creek Park
- Creekside Park
- Soroptimist Park

Additional Areas and Opportunities:

- Pick up trash around your own neighborhood
- Clean nearby alleyways
- Schools and school playgrounds
- Drainage ditches
- Around recycle dumpsters and restaurant dumpsters
- Creeksides

