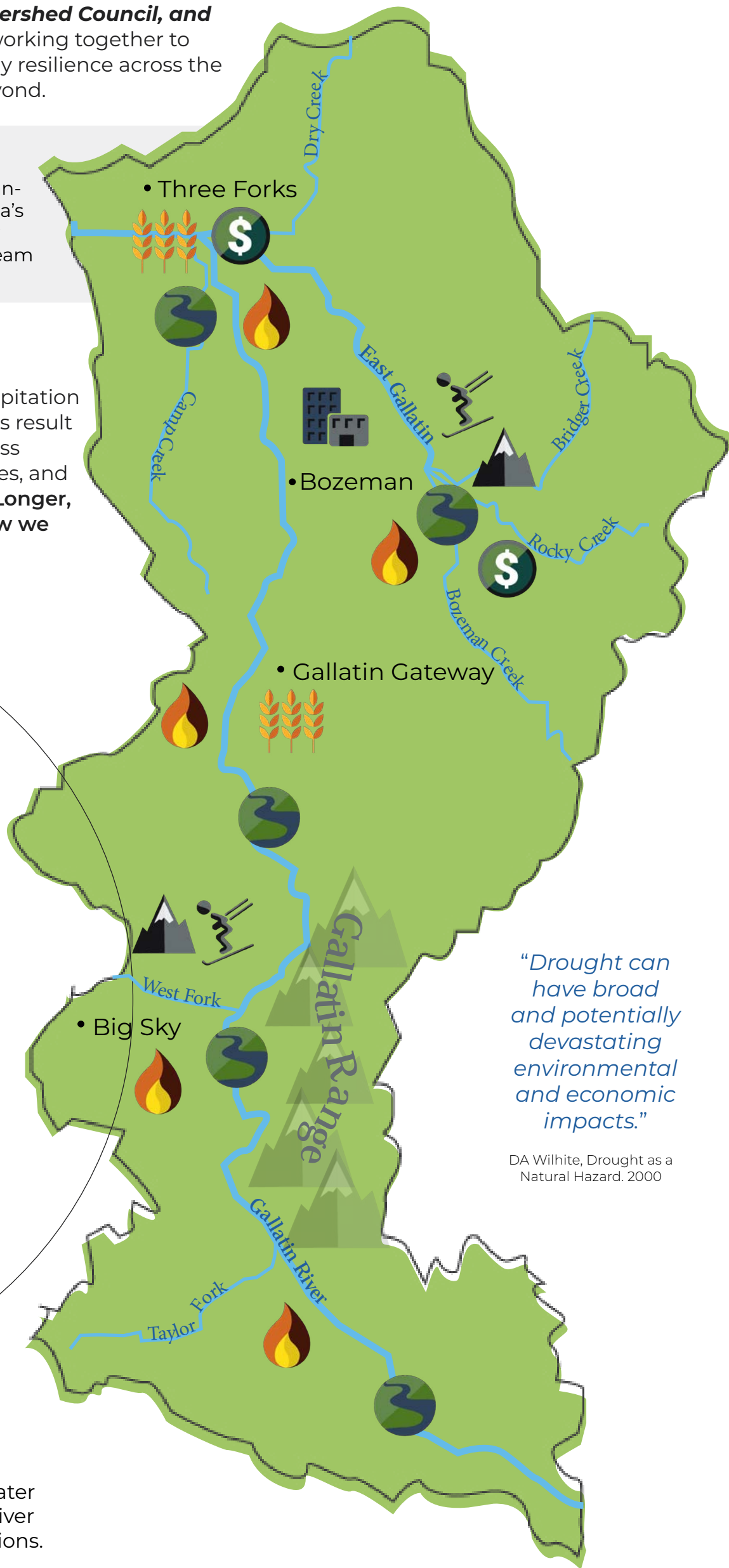


DROUGHT IN THE Gallatin River WATERSHED

The Gallatin River Task Force, Greater Gallatin Watershed Council, and City of Bozeman Water Conservation Division are working together to proactively prepare for drought and build water supply resilience across the watershed, from the headwaters to the valley and beyond.

a complex phenomenon driven by both climate and human-related activities. Droughts are a natural feature of Montana's climate. We most often experience them as prolonged low precipitation rates resulting in reduced water supplies, stream flows, and agricultural production.

Water supply availability is driven by snowpack and sensitive to drought conditions in the Gallatin River Watershed. Increasing temperatures affect how precipitation arrives in the watershed. Warming winters and springs result in reduced snowpack and earlier snowmelt, leaving less water to feed streams, recharge groundwater resources, and support agriculture and recreation-based industries. **Longer, more frequent and severe droughts may impact how we can use water in crucial times like summer.**



Use the map and interactive icons below to learn how drought impacts important sectors in your area of the Gallatin River Watershed.

- Increased Wildfire Risk
- Lower & Warmer Summer Streams
- Impacts to Local Recreation
- Stressed Municipal Water Supplies
- Reduced Agricultural Production
- Impacted Local Economy
- Reduced Snowpack & Early Snowmelt

"Drought can have broad and potentially devastating environmental and economic impacts."

DA Wilhite, Drought as a Natural Hazard. 2000

Resilience Starts with YOU

Educate yourself, get involved, and spread the word. Learn more about drought, drought preparedness, water conservation and resiliency planning in the Gallatin River Watershed by contacting any of these local organizations.

Visit these links to learn more

- [City of Bozeman Water Conservation Division](#)
- [Big Sky Water Conservation Rebate Programs](#)
- [Submit a Drought Impact Report](#)
- [Montana Climate Assessment](#)
- [Montana DNRC: Drought Management](#)