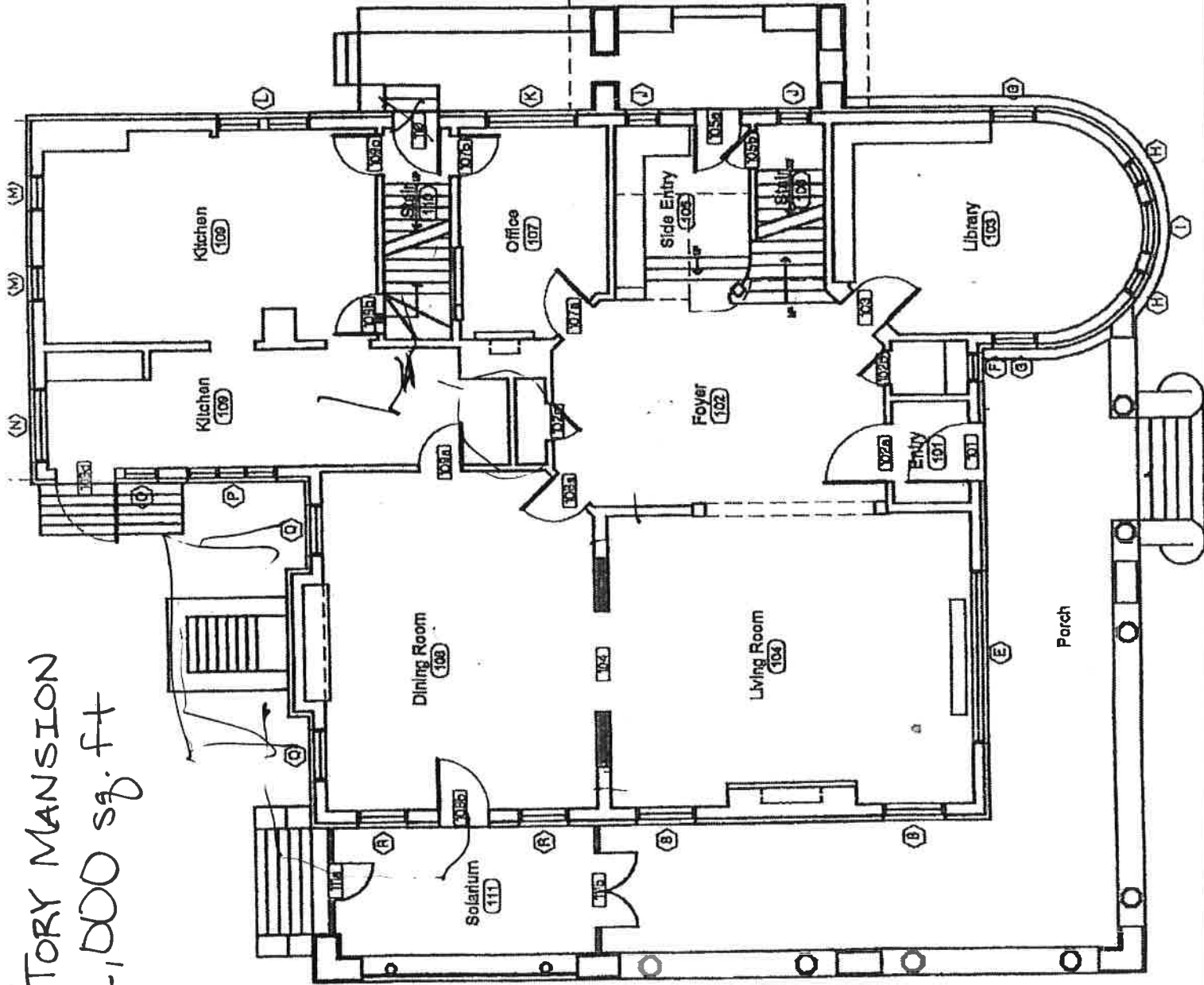


STORY MANSION
 2,100 sq. ft



Q	1	YES	FAIR	POOR
E	1	YES	FAIR	CAUSALTY
F	1	YES	FAIR	CAUSALTY
G	2	YES	FAIR	SMALL-HAD
H	2	YES	FAIR	SMALL-HAD
I	1	YES	FAIR	POOR
J	2	YES	FAIR	CAUSALTY
K	1	YES	FAIR	SMALL-HAD
L	1	YES	FAIR	SMALL-HAD
M	2	YES	FAIR	SMALL-HAD
N	1	YES	FAIR	POOR
O	1	NO	FAIR	POOR
P	1	NO	FAIR-POOR	CAUSALTY-POOR-CASE
Q	2	YES	FAIR	POOR
R	2	YES	FAIR	SMALL-HAD
S	2	YES	FAIR	SMALL-HAD

Condition Definitions.
 POOR: floors under with need replacement, limited ceiling and structural
 FAIR: requires weather stripping and/or paint, replace wood trim and work, no
 OCCC: no immediate work required

